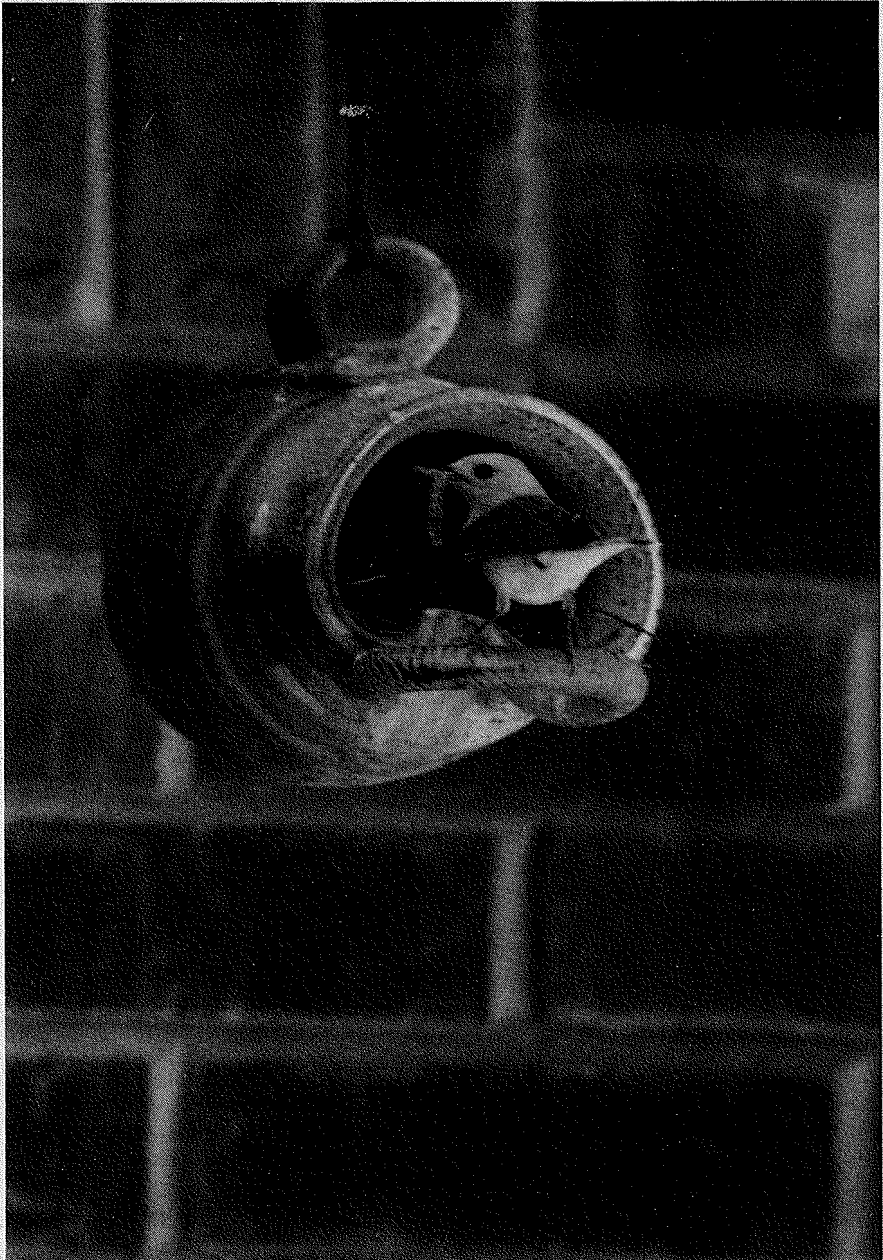


ISSN 0737-0393

THE MISSISSIPPI KITE

Vol. 28(1)

July 1998



A Periodical Published by the Mississippi Ornithological Society to Record and Further the Study of Mississippi Birdlife.

Vol. 28, No. 1

July 1998

Contents

- A YELLOW-BREASTED CHAT ENTANGLED IN BEGGAR'S LICE
....Christopher A. Woodson 2
- DIURNAL FALL MIGRATION OF PEREGRINES IN
NORTH MISSISSIPPIFred J. Broerman and W. Marvin Davis 4
- BIRDS AROUND THE STATE: JANUARY-DECEMBER 1995
....Compiled by Terence L. Schiefer 6
- MOS OFFICERS AND MEMBERSHIP INFORMATIONback cover
- COVER: Prothonotary Warbler (*Protonotaria citrea*) at its nest on a suburban patio near Starkville, Mississippi. Photo by Jerome A. Jackson.

A YELLOW-BREASTED CHAT ENTANGLED IN BEGGAR'S LICE

Christopher A. Woodson

*U.S.D.A. Forest Service
Southern Hardwoods Lab.
P.O. Box 227
Stoneville, MS 38776*

On the afternoon of 29 July 1997, I encountered a hatching year Yellow-breasted Chat (*Icteria virens*) caught in the prickly fruits of a single beggar's lice (*Hackelia virginiana*) plant 14.5 km east of Rohwer, Desha County, Arkansas. Weather conditions were clear and humid with a high temperature of 36° C. This unusual discovery was within a tract of bottomland hardwood forest located on ridge and swale topography bordering the Mississippi River and actively managed for sawtimber.

The bird's plumage was grayish olive above and below, brownish olive-green on the wings and tail, and there was a hint of white over the eye, matching the juvenal plumage of a Yellow-breasted Chat that has yet to undergo a postjuvinal molt into first basic plumage (Bent 1953). I found the chat alive, hanging upside down in the beggar's lice, caught by its primaries, secondaries, and rectrices. From the bird's fatigued appearance, its rapid breathing, and the high afternoon temperature, I suspect that it would have died in the beggar's lice. The bird was rescued with only minimal damage to its rectrices and appeared to be in good health upon release. No other record is known of a Yellow-breasted Chat found caught in vegetation (C.F. Thompson, Illinois State University, pers. comm.), although a Magnolia Warbler (*Dendroica magnolia*) was found caught in burdock (*Arctium minus*) in New York (Burnett 1970). I collected a sample of the beggar's lice plant and Dr. Charles Bryson (U.S.D.A. Agriculture Research Service, Stoneville, Mississippi, identified it.

Yellow-breasted Chats are abundant in the lowlands of southern Arkansas and adjacent Mississippi, reaching densities as high as 27.9 birds per Breeding Bird Survey route in Chicot County, Arkansas (James and Neal 1986). As a result of previous work in the area I had noticed that the number of Yellow-breasted Chats encountered on the Desha County site appeared to increase during the breeding seasons following a severe

ice storm which occurred in February 1994. Ice damage decreased canopy cover by 12% allowing a thick understory of saplings, vines, and herbaceous plants -- including beggar's lice -- to develop on many parts of the site.

ACKNOWLEDGMENTS

This research was supported by the U.S.D.A. Forest Service, Southern Research Station. Early drafts of this manuscript were reviewed by Paul Hamel, Mike Staten, and Charles Thompson.

LITERATURE CITED

- Bent, A.C. 1953. Life histories of North American wood warblers. U.S. Natl. Mus. Bull. 203.
- Burnett, C. 1970. Magnolia Warbler caught in burrs. *Kingbird* 20:73.
- James, D.A., and J.C. Neal. 1986. Arkansas birds: their distribution and abundance. University of Arkansas Press, Fayetteville, Arkansas.

DIURNAL FALL MIGRATION OF PEREGRINES IN NORTH MISSISSIPPI

Fred J. Broerman and

W. Marvin Davis

983 S. Line Street
Grenada, Mississippi 38901

308 Lewis Lane
Oxford, Mississippi 38655

The existing record of migratory observations on the Peregrine (*Falco peregrinus*) in Mississippi is essentially limited to earliest and latest dates seen. They seem not to have been reported in migratory flight. There have been few efforts to observe and record raptors in passage through Mississippi. Those observations that have been made involved mainly Broad-winged Hawks (*Buteo platypterus*). The greatest number of sightings of the Peregrine in Mississippi occur on the Gulf Coast, where they occur in winter as well as in migration season. Even there the highest number for a single day was only three birds on 3 January 1976 in Jackson County (Toups and Jackson 1987). Single Peregrines are recorded regularly during spring and fall migration in north Mississippi, but have not been noted in evident migratory flight (notes of G.C. Knight, W.M. Davis), despite their being a diurnal migrant (Palmer 1988:343).

At approximately 07:30 on 5 October 1996, FJB was at the south end of Grenada Dam in Grenada County at a parking area just north of the Visitor's Center. He saw two Peregrines flying southward toward him from the north end of the dam. They passed by and continued south out of sight. The first bird was an adult; the second, following ca. 100 m behind the first, was an immature. During the subsequent period of about 70 minutes after the passing of those two falcons, an additional four immature Peregrines and one adult were observed in leisurely flight even with the level of the top of the dam or slightly above the road on top of the dam. They would occasionally deviate from direct flight to circle in order to gain additional altitude to permit a stoop in seemingly playful mock attacks--a behavior well known for this species (Palmer 1988:368)--directed at Double-crested Cormorants (*Phalacrocorax auratus*) in the water or at crows (*Corvus* sp.) on the dam.

After the first two birds, all others were observed with no other falcon in sight

simultaneously. Viewing distances were sometimes as close as 25 m, adequate to be certain that none of the seven birds was a Prairie Falcon (*Falco mexicanus*) or a Merlin (*Falco columbarius*). All appeared to be of the *anatum* subspecies. Observations were made with 7x35 mm binoculars under partly cloudy skies. The southeast wind was fairly strong from across the lake so that the birds were flying largely into the wind. However, their ease of flight suggested that they were gaining advantage from an updraft rising as the wind struck the face of the dam.

Later the same day, FJB drove across the dam at 12:15 and 17:30, but saw no falcons. On the following day, 6 October, he watched for hawks at the same location from 07:50 to 09:00 continuously in similar weather, but saw no Peregrines. However, one immature Peregrine flew along the dam at 10:00 as did a Merlin at 11:50.

Peregrines will cross wide bodies of water, even for extensive distances (Palmer, 1988:343; Kerlinger 1989:339). Despite that fact, it appears that in this case the birds chose, when they encountered the lake, to follow the shoreline to the west as the wind direction favored. Reaching the end of the lake, they evidently turned south again following the dam and so passed the observer. The question might be raised as to why such a movement of falcons occurred on a day when wind direction seemingly more opposed than aided migration-- i.e., it was not a following wind in the direction of migration. However, the strong flight capacity of Peregrines makes them less influenced by wind conditions than are weaker fliers and the soaring broad-winged raptors (Kerlinger 1989:65).

LITERATURE CITED

- Kerlinger, P. 1989. Flight strategies of migrating hawks. University of Chicago Press, Chicago, Illinois.
- Palmer, R.S. 1988. Peregrine, *Falco peregrinus*. Pp. 324-380, in Handbook of North American Birds, Volume 5. Yale Univ. Press, New Haven, Connecticut.
- Toups, J.A., and J.A. Jackson. 1987. Birds and Birding on the Mississippi Coast. Universities Press of Mississippi, Jackson, Mississippi.

BIRDS AROUND THE STATE: JANUARY-DECEMBER 1995

Compiled by Terence L. Schiefer

*Department of Entomology
Mississippi State University
Mississippi State, Mississippi 39762*

The following is a summary of noteworthy bird sightings in Mississippi for the period 1 January through 31 December 1995. The sequence of information in each account is: species, number, date, place, observer(s). Numbers of birds sighted are underlined. The significance of sightings is indicated by letters in parentheses following a record. These letters are as follows: (A) = arrival date, (D) = departure date, (E) = early date, (L) = late date, (N) = unusually large number, (R) = species rare in area, (RS) = species rare at that season, (U) = species uncommon in area, (US) = species uncommon at that season. Other abbreviations used include the following: ad = adult; BBS = Breeding Bird Survey; CBC = Christmas Bird Count; Co. = County; cos. = Counties; f = female/s; Hwy. = Highway; imm = immature/s; Is. = Island/s; juv = juvenile; m = male/s; max. = maximum; mi = mile/s; m.ob. = many observers; MSU = Mississippi State University; NWR = National Wildlife Refuge; pl = plumage; pr = pair/s; PRM = Pascagoula River Marsh; Ref. = Refuge; Rd. = Road; S.L. = Sewage Lagoon; S.P. = State Park; sp. = species; subad = subadult; USFWS = United States Fish and Wildlife Service; WMA = Wildlife Management Area. The list of sightings is followed by a key to observers' initials and a gazetteer of localities.

Contributions of records are welcome from anyone who makes observations of Mississippi birds. Only with the assistance of many individuals from throughout the state over a period of years can we come to understand the dynamics of the bird populations of Mississippi. Contributors should submit records on 3" x 5" cards or similar-sized slips of paper with one record per card including the following information: species, number seen, date (including year), location (state, county and specific location), observer(s), and details and significance of observation. Very unusual records should be accompanied by full details including description of bird, details of observation, and explanation of how similar species were eliminated. While records are welcome at any time, those received by 15 March, 15 June, 15 August, and

15 December will be submitted with the seasonal report to Field Notes magazine (formerly American Birds) as well as being considered for use in The Mississippi Kite. Please send all records to:

Terence L. Schiefer
Mississippi State University
Department of Entomology
P. O. Box 9775
Mississippi State, MS 39762-9775

RED-THROATED LOON -- 1 ad, 24 Jan.-11 Mar., Enid Lake, Yalobusha Co., DM, JT, GK, SK, MD, JW, m.ob. (R)

COMMON LOON -- 1 ad, 28 May, Bay Springs Lake, Tishomingo Co., GK, SK (L); 1, 3 Aug., Gulfport harbor, TS (RS); 25, 16 Nov., Grenada Lake, Grenada Co., MD (N); 1, 19 Dec., Sardis Lake, Panola Co., MD, m.ob. (Low N)

PIED-BILLED GREBE -- 10 ad, 6, young, 29 Jul., Tippto, GK, SK (RS); 55, 16 Sep., Sardis Lake, Lafayette Co., MD (N); 112, 20 Dec., Sardis Lake, Panola Co., MD (N); 198, 22 Dec., Grenada Lake, Grenada Co., MD, m.ob. (N)

HORNED GREBE -- 24, 16 Mar., Oktibbeha Co. Lake, TS (N); 1, 5 Oct., Oktibbeha Co. Lake, TS (E); 260, 20 Dec., Sardis Lake, Panola Co., MD (N)

RED-NECKED GREBE -- 1, 7 Jan.-8 Mar., Enid Lake, Yalobusha Co., GK, SK, m.ob. (R)

EARED GREBE -- 1, 9-14 Nov., MSU North Farm S.L., TS, m.ob. (R)

WESTERN GREBE -- 1, 7 Jan.-8 Mar., Enid Lake, Yalobusha Co., GK, SK, m.ob. (R)

AMERICAN WHITE PELICAN -- 90, 4 Mar., USFWS Walker property, Sunflower Co., TJ (U); 30, 15 Mar., North unit Tallahatchie NWR, Quitman Co., TJ (U); 30, 21 Mar., Hwy. 8, Leflore Co., TJ (U); 13-550, 7 Oct.-Dec, Sardis Lake, Lafayette & Panola cos., MD (N); 600, 23 Nov., Arkabutla Lake, DeSoto & Tate cos., RP (N); 19-

30, 19-31 Dec., Sardis Lake, Lafayette & Panola cos., MD, m.ob. (N); 139, 22 Dec., Grenada Lake, Grenada Co., MD, m.ob. (N)

DOUBLE-CRESTED CORMORANT -- 1 imm, 15 Jul., Bluff Lake, Noxubee Co., TS, MS (RS)

ANHINGA -- 1 m, 1 Jan., Yazoo NWR, EA, BK (RS); 2, 17 Jan., Dodson's Farm, Hancock Co., JT, JP, m.ob. (RS); 1 ad m, 23 Jul., 1, 29 Jul., Malmaison WMA, Grenada Co., GK, SK (R); 1 ad m, 23 Jul., Hwy. 8 X Yalobusha River, Grenada Co., GK, SK (R); 1 ad f, 29 Jul., Tippo, GK, SK (R); 2, 30 Jul., Bluff Lake, Noxubee Co., TS (R); 1 f/imm, 21 Aug., Blocker's Bottom, TS (R); 1, ? Aug-11 Sep., Seaman Rd. S.L., JP, CC, m.ob. (U)

MAGNIFICENT FRIGATEBIRD -- 1, 21 Apr., south of Greenwood Is., GM, JT, JP (E)

AMERICAN BITTERN -- 1, 1-11 Feb., Seaman Rd. S.L., CC, GM, JP, m.ob. (RS)

GREAT BLUE HERON -- 16 May, USFWS Pennington property, Tallahatchie Co., TJ (nesting in heronry)

GREAT EGRET -- 25, 18 Mar. Noxubee NWR, Noxubee Co. and near Macon, TS, MS (E)

SNOWY EGRET -- 1, 14 Oct., Oktibbeha Co. Lake, TS, MS, RPu, TP (D)

LITTLE BLUE HERON -- 215, 29 Aug., Tippo, MD (N)

TRICOLORED HERON -- 1 imm, 26-27 Aug., Tippo, GK (R), 1, 11 Nov., Bluff Lake, Noxubee Co., MW, MSt, TS, m.ob. (R,L)

CATTLE EGRET -- 1-10, 1 Jan.-9 Mar. (max. 10, 1 Jan.), Oktoc Rd., Oktibbeha Co., TS, MS (RS); 6, 25 Mar., near Noxubee NWR, Oktibbeha Co., TS, MS (A); 480, 22 Sep., near Hollandale, MD (N); 8, 28 Oct., Oktoc Rd., Oktibbeha Co., TS, MS (D)

YELLOW-CROWNED NIGHT-HERON -- 1, 4 Sep., Yazoo NWR, EA (D)

WHITE IBIS -- 4 imm, 1 Jan., Yazoo NWR, EA, BK (RS); 3 ad, 23 Jul., Malmaison WMA, Grenada Co., GK, SK (U); 1 ad, 23 Jul., Tippto, GK, SK (U); many, 4 Sep., Yazoo NWR, EA (U)

GLOSSY IBIS -- 3, 10 Aug., Seaman Rd. S.L., JP, CC, AD (R)

WHITE-FACED IBIS -- 1, 15 Oct., Lakeshore, BM (R)

Plegadis sp. -- 2, 5 May, Noxubee NWR, Noxubee Co., DR (R); 1, 11 & 20 Sep., Seaman Rd. S.L., JP, CC (R); 12, 15 Oct., Lakeshore, BM (R)

ROSEATE SPOONBILL -- 1 imm, 20 Aug., 3 imm, 2 ad, 27 Aug., Saint Catherine Creek NWR, MW, VRe (R); 1, 6-20 Sep., Seaman Rd. S.L., BL, DM, AH, LJ, m.ob. (R - photographed)

WOOD STORK -- 2, ? Aug.-9 Sep., Seaman Rd. S.L., BL, DM, m.ob. (R)

FULVOUS WHISTLING-DUCK -- 3-5, 30 Apr.-14 May, Greenwood Is., CD, LJ, DM, m.ob. (R - photographed)

GREATER WHITE-FRONTED GOOSE -- 20, 21 Jan., near North Unit Tallahatchie NWR, Quitman Co., TJ (U); 667, 21 Jan., Hwy. 35, Grenada Co., TJ, MG (N); 1, 2 Mar., Noxubee NWR, Noxubee Co., TS (D)

SNOW GOOSE -- 2000+, 21 Jan., Hwy. 35, Grenada Co., TJ, MG (N); 6, 2 Mar., Noxubee NWR, Noxubee Co. and Oktoc Rd., Oktibbeha Co., TS (D)

ROSS'S GOOSE -- 1 ad, 15 Feb., Blocker's Bottom, TS (R); 1 ad, 4 Mar., Tunica Co., GK (R)

CANADA GOOSE -- adult and young, 16 May, USFWS Pennington property, Tallahatchie Co., TJ (nesting)

GREEN-WINGED TEAL -- 135, 21 Jan., Hwy. 35, Grenada Co., TJ, MG (N); 1, 15 Aug., Starkville south S.L., TS (A)

MALLARD -- 200, 21 Jan., Hwy. 35, Grenada Co., TJ, MG (N); 962, 21 Jan., North Unit Tallahatchie NWR, Quitman Co., TJ, MG (N)

NORTHERN PINTAIL -- 143, 21 Jan., Hwy. 35, Grenada Co., TJ, MG (N); 25, 16 Sep., Sardis Waterfowl Ref., MD (E,N)

BLUE-WINGED TEAL -- 1, 21 May, Starkville south S.L., TS, MS (L); 10, 4 Sep., Yazoo NWR, EA; 740, 16 Sep., Sardis Lake, Lafayette Co., MD (N)

NORTHERN SHOVELER -- 275, 21 Jan., Hwy. 35, Grenada Co., TJ, MG (N); 159, 21 Jan., North Unit Tallahatchie NWR, Quitman Co., TJ, MG (N); 65, 22 Sep., 8 mi west of Belzoni, MD (E,N)

AMERICAN WIGEON -- 1 m, 3 Jun., Walls, DeSoto Co., GK, SK (L)

CANVASBACK -- 40, 21 Jan., North Unit Tallahatchie NWR, Quitman Co., TJ, MG (N)

REDHEAD -- 22, 5-6 Mar., Oktibbeha Co. Lake, TS (N)

RING-NECKED DUCK -- 1 ad m, 23 Jul., Tippo, GK, SK (RS); 1, 3 Aug., Hattiesburg S.L., TS (RS); 2, 3 Aug., Laurel S.L., TS (RS)

GREATER SCAUP -- 1, 3 Aug., Greenwood Is., TS (RS); 44, 14 Jan., Ross Barnett Reservoir, Madison Co., TS (N)

LESSER SCAUP -- 1 m, 20 May, North Unit Tallahatchie NWR, Tallahatchie Co., GK (L); 1, 3 Aug., Laurel S.L., TS (RS); 1, 16 Oct., Oktibbeha Co. Lake, TS (A); 5000±, 3 Nov., Oktibbeha Co. Lake, TS (N)

SURF SCOTER -- 1 imm m, 27 Jan., Oktibbeha Co. Lake, TS (R); 1, 27 Oct., Seaman Rd. S.L., JT, AD, JP (R); 1 f/imm, 19-20 Dec., Oktibbeha Co. Lake, TS (R)

WHITE-WINGED SCOTER -- 1, 3 Nov., MSU North Farm S.L., TS (R); 1 f, 7-14 Nov., Oxford S.L., GK, SK, m.ob. (R)

HOODED MERGANSER -- 4, 26 Oct., Oktibbeha Co. Lake and MSU North Farm S.L., TS (A)

COMMON MERGANSER -- 1 f, 19 Dec., Sardis Lake, Panola Co., MD (R); 1 f, 22 Dec., Grenada Lake, Grenada Co., MD, DK, AM, DW (R)

RED-BREASTED MERGANSER -- 1, 21 Jan., near North Unit Tallahatchie NWR, Quitman Co., MG, TJ (RS); 1 m, 13 Feb, 4, 17 Feb., Oktibbeha Co. Lake, TS (RS); 16, 19 Dec., Sardis Dam, MD, m.ob. (L); 16, 22 Dec., Grenada Dam, MD, m.ob. (L)

BLACK VULTURE -- 5, 24 Dec., Grenada Airport, MD (U)

TURKEY VULTURE -- 1 ad, 2 young, 14 Jul., Tula community, Lafayette Co., JF

OSPREY -- 5 nests, May-June, Sardis Lake, Lafayette Co., KM (RS); 1, 12 Jun., Oktibbeha Co. Lake, TS (L); 1, 17 Nov., Woodland Lake, DeSoto Co., BP (L); 1, 22 Dec., Grenada Lake, Yalobusha Co., CD (RS)

MISSISSIPPI KITE -- 2, 20 May, New Hope, Lowndes Co., RW (R - seen copulating); 1 ad, 13 Jun., 1, 24 Jul., Hwy. 82 x Tombigbee Waterway, Lowndes Co., TS (R); 1, 26 Aug., Greenville, EA (D)

BALD EAGLE -- 1 ad, 25 Feb., Bluff Lake, Noxubee Co., TS, MS, m.ob. (D); 1 near ad, 12 Jun., Oktibbeha Co. Lake, TS (RS)

BROAD-WINGED HAWK -- 1, 8 Apr., near Adaton, TS, MS (A); 25, 22 Sep., Greenville, EA (N)

ROUGH-LEGGED HAWK -- 1, 20 Jan., Seaman Rd. S.L., GM, JP (R)

GOLDEN EAGLE -- 1 ad, 26 Jan., Sun Creek Bottom, Oktibbeha Co., TS (R); 1 imm, 16-31 Dec., Noxubee NWR, Winston Co., TS, m.ob. (R); 1 ad, 31 Dec., 11 mi south of Columbus, DP, JPa (R)

MERLIN -- 1, 20 & 25 Sep., 17 & 27 Oct., Seaman Rd. S.L., JP, GM, JT, AD (R); 1, 7 Oct., 1 f/imm, 17 Oct., Oktibbeha Co. Lake, TS (R); 1, 19 Dec., Sardis Dam, MD (R)

PRAIRIE FALCON -- 1, 1 Jan.-11 Mar., George Payne Cossar S.P., GK, SK, m.ob. (R - 4th winter at this location); 1, 12 Nov., George Payne Cossar S.P., GK (R - 5th winter at this location)

PEREGRINE -- 1, 14-15 Apr., PRM, GK, JW, MGr (R); 1 ad, 22 Sep., 8.5 mi east of Belzoni, MD (R)

KING RAIL -- 2, 25 Mar., North Unit Tallahatchie NWR, Tallahatchie Co., GK, SK (U); 3, 13 May, Blocker's Bottom, TS, MS (U)

VIRGINIA RAIL -- 3, 22 Dec., Grenada S.L., DK, AM, DW (RS)

SORA -- 1, 1 Jan., Washington Co. CBC, PB (RS); 2, 31 Jan., Grenada S.L., GK, PH (RS); 1, 3 Apr., USFWS Pennington property, Tallahatchie Co., TJ (U); 1, 13 May, Blocker's Bottom, TS, MS (L); 3, 22 Dec., Grenada S.L., DK, AM, DW (RS)

AMERICAN COOT -- 300+, 21 Jan., Hwy. 35, Grenada Co., TJ, MG (N); 300+, 4 Mar., USFWS Walker property, Sunflower Co., TJ (N); 500+, 21 Mar., Hwy. 8, Leflore Co., TJ (N); 2 ad, 1 imm, 23 Jul., Tippo, GK, SK (RS); 2, 3 Aug., Laurel S.L., TS (RS)

SANDHILL CRANE -- 5, 22-26 Dec., near Grenada Airport, MD, RB, GK (R)

BLACK-BELLIED PLOVER -- 1, 25 Aug., south of Carey, Sharkey Co., AM, CN (U); 3, 8 Nov, Oktibbeha Co. Lake, TS (L)

AMERICAN GOLDEN-PLOVER -- 23, 11 Mar., 55, 18 Mar., Little Texas, Tunica Co., JW (N); 1000+, 25 Mar., Hwy. 8, Grenada Co., GK, SK (N); 1, 8 Nov., Oktibbeha Co. Lake, TS (D)

WILSON'S PLOVER -- 1, 12 Apr., 4, 15 Apr., Greenwood Is., GK, DM, JW, SK, MGr (U - 1 f on 15 Apr. on nest)

SEMIPALMATED PLOVER -- 1, 4 Sep., Yazoo NWR, EA

BLACK-NECKED STILT -- 1, 25 Mar., North Unit Tallahatchie NWR, Quitman Co., GK, SK (R); 2 ad, 20 May, Tippo, GK (R - at nest, turning eggs); 3 ad, 4 downy young, 2 Jul., Tippo, GK, SK (R); 29, 26 Aug., south of Carey, Sharkey Co., AM (R); 4, 4 Sep., Yazoo NWR, EA (R)

AMERICAN AVOCET -- 2, 10 Aug., 3, 28 Aug., 3, 27 Oct., Seaman Rd. S.L., JP, CC, JT, AD, m.ob. (R); 1, 14 Oct., Oktibbeha Co. Lake, TS, MS, RPu, TP (R); 1, 28 Oct., Sardis Lake, Lafayette Co., MD (R,L)

LESSER YELLOWLEGS -- 2, 21 Jan., Hwy. 35, Grenada Co., TJ (R,S); 2, 25 Nov., 3 mi northeast of Macon, TS, MS (L)

SOLITARY SANDPIPER -- 1, 15 Jan., McComb S.L., TS, MS, JR (RS - 1st winter record for state, photo by TS)

WILLET -- 5, 15 Jul., 1, 4 Aug., 5, 5 Aug., Sardis Dam Lower Lake, MD (R)

SPOTTED SANDPIPER -- 1, 19 Dec., Sardis Dam, DK, AM (RS)

UPLAND SANDPIPER -- 1, 25 Mar., Horn Lake, DeSoto Co., JW (A); 3, 21 Apr., Seaman Rd. S.L., GM, JT, JP (U); 1, 11 Sep., Seaman Rd. S.L., AD, CC, JP (U)

WHIMBREL -- 1, 12-22 Apr., Greenwood Is., CD, GK, DM, JW, m.ob. (U)

SANDERLING -- 1, 16 Sep., Oktibbeha Co. Lake, TS, MS (U); 6, 30 Sep., 27, 7 Oct., 12, 9 Oct., 10, 10 Oct., 2, 17 Oct., Sardis Lake, Lafayette Co., MD (U,N)

SEMIPALMATED SANDPIPER -- many, 4 Sep., Yazoo NWR, EA

WESTERN SANDPIPER -- few, 4 Sep., Yazoo NWR, EA

LEAST SANDPIPER -- few, 4 Sep., Yazoo NWR, EA

WHITE-RUMPED SANDPIPER -- 27, 18 May, A & D Turf Farm, GK (N)

BAIRD'S SANDPIPER -- 2, 26 Aug., south of Carey, Sharkey Co., AM (U); 1, 16 & 27 Sep., Oktibbeha Co. Lake, TS, MS (U)

PECTORAL SANDPIPER -- 1153, 26 Aug., Tippo, GK (N); 20, 4 Sep., Yazoo NWR, EA

DUNLIN -- 75+, 11-16 May, near Choctaw, Bolivar Co., NH, JC (N); 1, 25 Aug., south of Carey, Sharkey Co., AM, CN (E); 2, 24-31 Dec., Oktibbeha Co. Lake, TS (RS)

STILT SANDPIPER -- 1, 16 Feb., Seaman Rd. S.L., DCo, JP, m.ob. (E); 2, 25 Mar., North Unit Tallahatchie NWR, Quitman Co., GK, SK (E)

BUFF-BREASTED SANDPIPER -- 1, 12 Apr., Greenwood Is., GK, DM (RS); 1, 24 Jul., A & D Turf Farm, GK (U); 2, 2 Sep., Weir, TS (U); 15, 10 Sep., Tippo, GK, SK (U,N); 1, 11 Sep., Seaman Rd. S.L., JP, CC, AD (U)

SHORT-BILLED DOWITCHER -- 80+, 25 Mar., North Unit Tallahatchie NWR, Quitman Co., GK, SK (E,N)

LONG-BILLED DOWITCHER -- 4, 21 Nov., Oktibbeha Co. Lake, TS (L)

AMERICAN WOODCOCK -- 1, 11 Feb., Tillatoba, Holly Springs National Forest, Yalobusha Co., TJ, FM

WILSON'S PHALAROPE -- 1, 15 Apr., Greenwood Is., CC, GM, JP (U); 1 f, 17 May, Starkville south S.L., TS, MS (R); 1, 25-26 Aug., south of Carey, Sharkey Co., AM, CN (U)

LAUGHING GULL -- 2 ad, 24 May, Oktibbeha Co. Lake, TS (R); 2 ad in alternate pl, 4 Aug., 1, ad in alternate pl, 5-7 Aug., 1 ad in basic pl, 6-7 Aug., Oktibbeha Co. Lake, TS, MS (R - seen after Hurricane Erin); 3, in juv pl, 5 Aug., MSU North Farm, TS, MS (R - seen after Hurricane Erin); 1 ad in alternate pl, 7 Aug., Starkville south S.L., TS (R - seen after Hurricane Erin)

FRANKLIN'S GULL -- 1 ad, 1 imm, 21 Oct., Enid Lake, Yalobusha Co., GK (R); 2, 28 Oct., Oktibbeha Co. Lake, TS (R); 1 imm, 4 Nov., Canton S.L., GK, SK (R); 23 imm, 4 Nov., Grenada Lake, Yalobusha Co., MD (R,N); 1 ad, 2 Dec., Grenada Lake, Grenada Co., MD (R,L)

LITTLE GULL -- 1 ad, 1 Jan.-4 Mar., 1 imm, 1-3 Jan., Sardis Dam, GK, SK, GB, IB, m.ob. (R - 7th & 8th state records); 1 imm, 11 Feb., Grenada Dam, MD (R); 1, 21 May, PRM, CD, DM, CB, DeM, m.ob. (R - 10th state record, photographed)

BONAPARTE'S GULL -- 1, 27 Apr., Oktibbeha Co. Lake, TS (L)

RING-BILLED GULL -- 1 subad, 5 Aug., Grenada Lake, Grenada Co., MD (E); 300, 18 Nov., Sardis Lake, Panola Co., MD (N)

GLAUCOUS GULL -- 1 in 1st winter pl, 15-16 Jan., Arkabutla Dam, DeSoto Co., JW, GK, SK (R); 1 imm, 4 Feb., Pascagoula, DC, MGU (R)

BLACK-LEGGED KITTIWAKE -- 1 in 1st winter pl, 11-12 Dec., Bluff Lake, Noxubee Co., TS, MS, MG (R)

CASPIAN TERN -- 14, 14 Oct., Sardis Lake, Lafayette Co., MD (N)

COMMON TERN -- 20, 22 May, Bluff Lake, Noxubee Co., TS (R); 2, 27 May, Bluff Lake, Noxubee Co., MS (R); 1, 3 Oct., Oktibbeha Co. Lake, TS (R)

FORSTER'S TERN -- 82, 4 Mar., Sardis Dam Lower Lake, GK (N); 3, 13 May, Oktibbeha Co. Lake, TS, MS (L); 160, 22 Sep., Grenada Lake, Yalobusha Co., MD (N); 90, 22 Oct., 40, 17 Nov., Sardis Lake, Lafayette Co., MD (N); 1, 24 Dec., Oktibbeha Co. Lake, TS (RS)

LEAST TERN -- 1, 13 May, Blocker's Bottom, TS, MS (RS); 25, 25 Aug., 47, 26 Aug., south of Carey, Sharkey Co., AM, CN (U,N); 2, 26 Aug., Sardis Waterfowl Ref., MD (U); 2, 4 Sep., Yazoo NWR, EA (U)

BLACK TERN -- 1, 27 May, Bluff Lake, Noxubee Co., MS (RS); 1 ad, 16 Jun., Bluff Lake, Noxubee Co., TS (RS); 15, 23 Jul., 11, 29 Jul., Tippto, GK, SK (N)

EURASIAN COLLARED-DOVE -- increasing numbers, Jan.-Apr., Pascagoula, CD, LJ, m.ob. (R - possibly breeding); 3, 13 Apr., Pascagoula, GK (R); 15, 3 Aug., Pascagoula, TS (N); 2, 4 Sep., Belzoni, GK, SK (R - 1st inland sighting); 5, 11 & 13 Nov., Greenville, DW (R)

WHITE-WINGED DOVE -- 123, 13 Feb., Pascagoula, CD, LJ (R,N); 1, 13 Apr., 6, 16 Apr., Pascagoula, GK, SK, JW, MGr (R - one seen on nest 16 Apr. by JW & MGr, 1st nesting in state); small numbers, 24 Apr., Pascagoula, CD, LJ (R)

COMMON GROUND-DOVE -- 30+, 9 Mar., 25 mi north of Pascagoula, Deans Nursery off Hwy. 613, George Co., LJ, CD, LE (R,N); 1 f on nest with 2 eggs, 18 Jun., 2 hatchlings, 28 Jun., 25 mi north of Pascagoula, Deans Nursery off Hwy. 613, George Co., LJ, m.ob. (R - 1st nesting in Mississippi, photo by CC)

GREAT HORNED OWL -- 1, 7 Oct., Greenville, EA

BURROWING OWL -- 1, about 7 Feb.-about 15 Mar., near Hollandale, Washington Co., EG, m.ob. (R)

CHUCK-WILLS-WIDOW -- 1, 10 Apr., near Adaton, TS, MS (E); 1, 9 Aug., near Adaton, TS, MS (D)

CHIMNEY SWIFT -- 4, 21 Mar., Starkville, TS (A); 1, 13 Oct., Greenville, EA (D)

WHITE-EARED HUMMINGBIRD -- 1 imm f, mid-Nov.-31 Dec., Gulfport, BC, m.ob. (R - 1st state record, banded 29 Dec. by BC)

BUFF-BELLIED HUMMINGBIRD -- 1, 4 Nov., Pass Christian, BM (R); 1 imm, 15 Dec., Bay Saint Louis, BC (R - banded)

RUBY-THROATED HUMMINGBIRD -- 1 imm m, 14 Nov., Ocean Springs, BS, MSa (L - banded); 1 imm m, 19 Nov., Diamondhead, BC (L - banded)

BLACK-CHINNED HUMMINGBIRD -- 1 ad m, 1 Jan.-3 Apr., Gulfport, BC (R - banded by BS, MSa, 23 Oct. 1994, return from winter 1993/1994); 1 ad f, 14 Nov., 1 imm f, 1 Dec., 1 imm m, 9 Dec., Ocean Springs, BS, MSa, BC (R - banded); 1 imm m,

25 Nov., Gulfport, BC (R - banded); 1 ad f, 1 imm f, 14 Dec., Moss Point, BC (R - banded)

ANNA'S HUMMINGBIRD -- 1, 1 Jan.- 3rd week of Jan., Bay Saint Louis, LS, JT, m.ob. (R - 1st state record, identification confirmed 26 Dec. 1994 by BS); 1 ad f, 27 Nov.-30 Dec., Starkville, MC, TS, m.ob. (R - 2nd state record, banded 1 Dec. by BS); 1 ad f, 9-31 Dec., Pass Christian, BM (R - 3rd state record, banded 19 Dec. by BC)

CALLIOPE HUMMINGBIRD -- 1 imm f, 1 Jan.-29 Mar., Columbus, BS, CCa, TS, MS, m.ob. (R - 8th state record, identified by BS, 22 Feb.); 1 imm m, 30 Jan., Gulfport, BS, MSa (R - 6th state record, banded); 1 ad f, 31 Jan., Diamondhead, BS, MSa (R - 7th state record, banded); 1 ad m, 14 Nov.-31 Dec., Diamondhead, DH, BS, MSa (R - 9th state record, banded 14 Nov. by BS, MSa)

BROAD-TAILED HUMMINGBIRD -- 1 imm m, 9-31 Dec., Pass Christian, BM (R - 4th state record, banded 19 Dec. by BC)

RUFIOUS HUMMINGBIRD -- 1 imm m, 30 Jan., Gulfport, BS, MSa (U - banded); 1 imm f, 2 imm m, 31 Jan., Diamondhead, BS, MSa (U - banded); 1 ad m, 17 Sep., Vicksburg, JaW, AM (R); 1 ad m, 28 Sep., Shannon, Lee Co., AJ, EJ (R - banded by BS); 1 imm f, 28 Sep., Tupelo, BS (R - banded); 1 imm f, 2 imm m, 14 Nov.-31 Dec., Starkville, MC, TS, m.ob. (R - banded 1 Dec. by BS); 2 imm f, 2 imm m, 14 Nov., 1 ad m, 15 Nov., 3 imm m, 1 ad f, 2 Dec., 1 imm f, 28 Dec., Diamondhead, BS, MSa, BC (U - banded); 1 ad f, 22 Nov., 1 ad f, 25 Nov., 1 imm f, 26 Nov., 1 imm m, 4 Dec., 1 imm m, 1 imm f, 8 Dec., 2 imm f, 15 Dec., 1 imm m, 16 Dec., 1 imm m, 26 Dec., Gulfport, BC (U - banded); 1 imm m, 25 Nov., near Carriere, BC (U - banded); 1 imm f, 1 imm m, 15 Dec., Bay Saint Louis, BC (U - banded); 1 ad f, 16 Dec., Ocean Springs, BC (U - banded); 1 imm m, 26 Dec., 2 ad f, 30 Dec., Biloxi, BC (U - banded); 1, imm f, 28 Dec., Pass Christian, BC (U - banded)

ALLEN'S HUMMINGBIRD -- 1 imm m, 31 Jan., Diamondhead, BS, MSa (R - 3rd state record, banded); 1 imm m, 14 Nov., Ocean Springs, BS, MSa (R - 4th state record, banded); 1 imm m, 20 Dec., Gulfport, BC (R - 5th state record, banded)

Selasphorus sp. -- 1 f/imm, 7 Sep., Vicksburg, HM (R); 1 imm m, 4-20 Nov., Starkville, JL, TS, MC, m.ob. (R); 1, 13-31 Dec., Starkville, TS (R)

YELLOW-BELLIED SAPSUCKER -- 1, 5 Sep., Greenville, EA (E)

NORTHERN FLICKER -- 220, 17 Mar., Mississippi River levee, Bolivar & Coahoma cos., GK, SK (N)

EASTERN WOOD-PEWEE -- 1, 15 Apr., Starkville south S.L., TS (A); 1, 16 Oct., Greenville, EA (D)

Empidonax sp. (Traill's complex) -- 1, 25 Aug., south of Carey, Sharkey Co., AM, CN (R)

LEAST FLYCATCHER -- 1, 20 May, Sardis Lake, Panola Co., GK, SK (R); 1, 5 Sep., Noxubee NWR, Noxubee Co., TS (E)

EASTERN PHOEBE -- 1, 30 Sep., Noxubee NWR, Oktibbeha Co., TS, MS (E)

GREAT CRESTED FLYCATCHER -- 1, 22 Sep., Greenville, EA (D)

SCISSOR-TAILED FLYCATCHER -- 1, 24 May, Dundee BBS route, Tunica Co., CBu, VR (R); 1, 7 Oct., Ansley, JP, AH, DM (R); 3, 14 Oct., Bayou Caddy, BM (R)

PURPLE MARTIN -- 5, 19 Feb., Hollandale, TS, MS (A); 3, 21 Feb., Oktibbeha Co. Lake., TS (A)

TREE SWALLOW -- 1, 3 Mar., MSU North Farm, TS (E); 2, 24 May, Sardis Lake, Lafayette Co., VT (RS - at nest cavity, 1st nesting in state); 1 f/imm, 29 Jun., Oktibbeha Co. Lake, TS (RS)

NORTHERN ROUGH-WINGED SWALLOW -- 3, 27 Feb., MSU North Farm S.L., TS (E); 2, 26 Oct., Oktibbeha Co. Lake, TS (D)

CLIFF SWALLOW -- 12 nests, 13 Jun., Hwy. 82 X Hickory Grove Rd., Oktibbeha Co., TS (RS); 5 nests, 21 June, Hwy. 82 X Hwy. 182, Oktibbeha Co., TS (RS); 5 nests, 26 June, Hwy. 82 X Golden Triangle Airport interchange, Lowndes Co., TS (RS)

BARN SWALLOW -- 1, 11 Nov., MSU North Farm S.L., MS, TS, m.ob. (L)

FISH CROW -- 2, 26 Nov., Tillatoba Lake, Yalobusha Co., TJ (U)

RED-BREASTED NUTHATCH -- 1, 16 Sep., Oxford, JB (E); several, 14 Oct.-30 Nov., Hancock & Harrison cos., BM (N)

BROWN CREEPER -- 1, 1 Feb., Logtown, MB, CC, JP (U)

BEWICK'S WREN -- 1, 21 Jan., North Unit Tallahatchie NWR, Quitman Co., TJ, MG (R); 1, 12 Oct.-31 Dec., Hickory, JM (R); 1, 25 Nov., 3 mi northeast of Macon, TS, MS (R)

HOUSE WREN -- 1, 21 Apr., Oktibbeha Co. Lake, TS (D)

SEDGE WREN -- 2, 21 Jan., Hwy. 35, Grenada Co., TJ, MG (R)

MARSH WREN -- 1, 25 Mar., North Unit Tallahatchie NWR, Tallahatchie Co., GK, SK (U)

GOLDEN-CROWNED KINGLET -- 1, 7 Oct., Oktibbeha Co. Lake, TS (E)

RUBY-CROWNED KINGLET -- 1, 25 Sep., near Starkville, TS (E)

BLUE-GRAY GNATCATCHER -- 1, 15 Jan., Percy Quin S.P., TS, MS, JR (RS); 1, 20 Mar., MSU North Farm, TS (A)

SWAINSON'S THRUSH -- 1, 13 Sep., MSU North Farm, TS (E); 1, 1 Oct., Greenville, EA

HERMIT THRUSH -- 1, 18 Apr., near Starkville, TS (D)

WOOD THRUSH -- 1, 9 Apr., near Adaton, TS, MS (A); 1, 6 Oct., Pearl River Waterfowl Ref., Madison Co., TJ (D)

GRAY CATBIRD -- 1, 1 Jan., MSU North Farm, MS, TS (R); 1, 7 Oct., Greenville, EA

CEDAR WAXWING -- 1, 24 Jun., Meridian, VM (RS)

WHITE-EYED VIREO -- 1, 26 Feb., near Oktoc, Oktibbeha Co., TS (RS); 1, 15 Oct., Greenville, EA

WARBLING VIREO -- 3, 14 May, Mississippi River levee, near Scott, Bolivar Co., NH

RED-EYED VIREO -- 4, 9 Apr., Noxubee NWR, Oktibbeha Co. and near Adaton, TS, MS (A)

BLUE-WINGED WARBLER -- 1 m, 25 Feb., Noxubee NWR, Winston Co., TS, MS (RS)

TENNESSEE WARBLER -- 1, 19 Apr., near Adaton, TS (A); 1, 6 Sep., MSU North Farm, TS (A); several, 24 Oct., Hickory, JM

NASHVILLE WARBLER -- 1, 17 Sep., MSU North Farm, TS (A)

YELLOW WARBLER -- 1, 27 Jul., Starkville south S.L., TS (E); 1, 17 Oct., Starkville south S.L., TS (L)

CHESTNUT-SIDED WARBLER -- 1, 22 Apr., Noxubee NWR, Noxubee Co., TS, MS (E); 1, 19 Oct., Noxubee NWR, Noxubee Co., TS (D)

MAGNOLIA WARBLER -- 1, 1 Sep., MSU North Farm, TS (A); 1, 22 Sep., Greenville, EA

CAPE MAY WARBLER -- 1 m, 4 May, near Sardis Waterfowl Ref., GK (R)

YELLOW-RUMPED "Audubon's" WARBLER -- 1, 15 Jan., Percy Quin S.P., TS, MS, JR (R)

BLACK-THROATED GREEN WARBLER -- 1, 1 Oct. & 15 Oct., Greenville, EA; 1, 24 Oct., Hickory, JM; 3, 30 Oct., MSU North Farm, TS (L)

YELLOW-THROATED WARBLER -- 1, 1 Jan., Washington Co. CBC, AM (RS)

PALM WARBLER -- 8, 18 Mar., 11 mi east of Macon, TS, MS (N); 1, 11 Sep., MSU North Farm, TS (E)

BAY-BREASTED WARBLER -- 1, 27 Sep., near Adaton, TS (A)

BLACKPOLL WARBLER -- 1, 22 Apr., Oktibbeha Co. Lake, TS, MS (A)

CERULEAN WARBLER -- 1, 30 Jul., Noxubee NWR, Noxubee Co., TS (RS); 1, 16 Aug., Noxubee NWR, Oktibbeha Co., TS (RS)

BLACK-AND-WHITE WARBLER -- 2, 24 Sep., 1, 4 Oct., Greenville, EA

AMERICAN REDSTART -- 1, 22 Sep., Greenville, EA; 2, 20 Oct., Starkville south S.L. and MSU North Farm, TS (D)

OVENBIRD -- 3, 28 May, Tishomingo S.P., GK, SK (US); 1, 5 Sep., Noxubee NWR, Noxubee Co., TS (E)

NORTHERN WATERTHRUSH -- 1, 19 Oct., Loakfoma Lake, TS (L)

KENTUCKY WARBLER -- 1 30 Sep., Noxubee NWR, Oktibbeha Co., TS, MS (L)

HOODED WARBLER -- 2, 2 Apr., Noxubee NWR, Oktibbeha Co., TS, MS (A)

WILSON'S WARBLER -- 1 m, 13 May, Bass Landing, DeSoto Co., GK, SK (RS); 1, 3 Sep., Oktibbeha Co. Lake, TS (E)

YELLOW-BREASTED CHAT -- 1, 16 Sep., Greenville, EA; 1, 30 Sep., near Noxubee NWR, Oktibbeha Co., TS, MS (D)

SUMMER TANAGER -- 2, 9 Apr., Noxubee NWR, Oktibbeha Co., TS, MS (A); 1, 22 Sep., 1 f, 15 Oct., Greenville, EA (D - banded)

SCARLET TANAGER -- 3 singing m, 28 May, Tishomingo S.P., GK, SK (US); 1, 2

Sep., Choctaw Lake, TS (A)

BLACK-HEADED GROSBEAK -- 1, 4 May, Shannon, Lee Co., AJ, MJ (R)

BLUE GROSBEAK -- 1, 9 Apr., near Adaton, TS, MS (E); 1, 12 Oct., MSU North Farm, TS (D)

INDIGO BUNTING -- 1, 14 Apr., near Adaton, TS, MS (A)

PAINTED BUNTING -- 1, 20 May, southwest Grenada Co., GK, SK (R); 1 pr and 3 singing ad m, 2 Jul., Grenada/Tallahatchie Co. line, GK, SK (R); 2 f/imm, 1 Sep., MSU North Farm, TS (R)

DICKCISSEL -- 1 m, 4 Sep., Noxubee NWR, Winston Co., TS (RS); 1 f, 7 Oct., near Adaton, TS, MS (RS); 1 f, 28 Oct., Noxubee NWR, Winston Co., TS, MS (RS,L)

BACHMAN'S SPARROW -- 2, 5 May, Grenada Lake, Grenada Co., GK, SK (U)

CLAY-COLORED SPARROW -- 1, 7 Oct., Logtown, JP, DM, AH (E,R)

FIELD SPARROW -- 1, 26 Oct., MSU North Farm, TS (A)

VESPER SPARROW -- 1, 11 Apr., Starkville south S.L., TS (D)

LARK SPARROW -- 1, 1 Jan., Washington Co. CBC, EG (R); 1, 21 May, Crawford, TS, MS (R); 1 ad m singing, 2 Jul., Tippto, GK, SK (R)

GRASSHOPPER SPARROW -- 1, 29 Apr., Mississippi River levee, Warren Co., TS (R); 1, 21 May, 9 mi east of Macon, TS, MS (R); 1, 3 Jun., Mississippi River levee, DeSoto Co., GK, SK (R - seen carrying food to nest); 1, 25 Oct., Starkville, MG (R - found freshly dead, deposited MSU)

LECONTE'S SPARROW -- 4, 16 Dec., Noxubee NWR, Noxubee & Winston cos., TS, MS, TK (U)

FOX SPARROW -- 1, 20 Oct., Golden Triangle Airport, TS (E)

LINCOLN'S SPARROW -- 1, 25 Mar., North Unit Tallahatchie NWR, Tallahatchie Co., GK, SK (U); 1, 10 May, MSU North Farm, TS (U)

WHITE-THROATED SPARROW -- 1, 12 Nov., Greenville, EA

DARK-EYED JUNCO -- 1, 7 Oct., near Adaton, MS (A)

LAPLAND LONGSPUR -- 2, 25 Nov., A & D Turf Farm, MD (U)

BOBOLINK -- 100, 27 Apr., MSU North Farm, MG (N); 13, 4 Sep., Noxubee NWR, Winston Co., TS (RS)

WESTERN MEADOWLARK -- 1, 19 Feb., Sidon, MS, TS (R); 1, 4 Mar., Tunica Co., GK (R); 1, 18 Nov., near Little Texas, Tunica Co., RP, GB, BP (R)

YELLOW-HEADED BLACKBIRD -- 1 ad m, 28 Mar., Starkville, FS, TS (R - photographed); 1 m, 14 May, Hwy. 450 west of Choctaw, Bolivar Co., NH, JH (R)

ORCHARD ORIOLE -- 1, 4 Apr., near Adaton, MS (E); 1, 4 Sep., Noxubee NWR, Winston Co., TS (L)

BALTIMORE ORIOLE -- 1, 25 Apr., near Adaton, MS (A)

PURPLE FINCH -- 1, 29-30 Dec., Choctaw, Bolivar Co., NH

RED CROSSBILL -- 1, 21 Nov., 7 mi south of Oxford, GK (R); 2 imm m, 31 Dec., 3 mi south of Brooksville, DP, JPa (R)

EVENING GROSBEAK -- 2, 16 Nov., Columbus, DP, JPa (R); 20, 20 Nov., near Sardis Lake, Panola Co., CNo (R); 20, 23 Nov., 1, 24 Nov., Chickasaw Bluff Lakes, DeSoto Co., RP (R); 1 m, 1 Dec., near Sardis Lake Panola Co., EF (R); 2, 25-26 Dec., Columbus, MK (R)

Contributors

Ed Alexander, Micky Baker, Philip Barbour, Gilbert Beaver, Ivon Beaver, Charley

Brenke, Robert Briscoe, Carolyn Bullock (CBu), Judy Burkepile, Chris Caine (CCa), Bennett Carver, Chita Cassibry, David Cimprich, Dwight Cooley (DCo), Margaret Copeland, Marvin Davis, Charlie Delmas, Alice Duckett, Lily Easterling, James Freeman, Earl Fuller, Elie Ganier, Mark Goodman, Mark Green (MGr), Mark Guilfoyle (MGu), Alison Henry, J.C. Herbert, Nona Herbert, Prentiss Hooper, Doris Hope, Lucy Jacobson, Terri Jacobson, Allen Jolley, Evrette Jolley, Mae Jolley, Bern Keating, Martha Kidder, David King, Tommy King, Gene Knight, Shannon Knight, Judy Lofton, Bill Longwood, Frank Manzo, Joe McGee, Dena McKee (DeM), Don McKee, Van McWhorter, Keith Meals, Hal Moore, Gerry Morgan, Allan Mueller, B. Mac Myers, Curtis Nelms, Connie Norris (CNo), Dianne Patterson, Jim Patterson (JPa), Bill Peeples, Rob Peeples, JoRee Pennell, Ruth Pullen (RPu), Tom Pullen, Judee Reeves, Virginia Retting (VRe), Virginia Reynolds, Dave Richardson, Bob Sargent, Martha Sargent (MSa), Marion Schiefer, Terence Schiefer, Lydia Schultz, Mary Stevens (MSt), Faye Swan, Vic Theobald, Judith Touns, Ray Weeks, Dennis Welch, Jane Williams (JaW), Jeff Wilson, Mark Woodrey

Key to Localities

Localities not listed are indexed on the "Official Highway Map of Mississippi" or the county is listed in the main text.

A & D Turf Farm = Lafayette Co.; Adaton = Oktibbeha Co.; Ansley = Hancock Co.; Arkabutla Dam/Lake = DeSoto & Tate cos.; Bayou Caddy = Hancock Co.; Bay Springs Lake = Tishomingo and Prentiss cos.; Blocker's Bottom = Oktibbeha Co.; Bluff Lake = Noxubee NWR, Noxubee & Oktibbeha cos.; Enid Lake = Yalobusha, Panola & Lafayette cos.; Golden Triangle Airport = Lowndes Co.; Greenwood Is. = Jackson Co.; Grenada Dam/Airport = Grenada Co.; Grenada Lake = Grenada, Yalobusha & Calhoun cos.; Loakfoma Lake = Noxubee NWR, Noxubee Co.; Logtown = Hancock Co.; Malmaison WMA = Grenada & Carroll cos.; MSU North Farm = Oktibbeha Co.; Noxubee NWR = Noxubee, Oktibbeha & Winston cos.; PRM = Pascagoula River Marsh, Jackson Co.; Ross Barnett Reservoir = Madison & Rankin cos.; Saint Catherine Creek NWR = Adams Co.; Sardis Dam/Lower Lake = Panola Co.; Sardis Lake = Panola & Lafayette cos.; Sardis Waterfowl Ref. = Lafayette Co.; Seaman Rd. S.L. = Jackson Co.; Yazoo NWR = Washington Co.

THE MISSISSIPPI KITE

Mississippi Ornithological Society
Organized 30 April 1955

Officers

President	Allan J. Mueller 4308 Shenandoah Road Vicksburg, MS 39180
Vice President	Shannon Knight 79 Highway 9W Oxford, MS 38677
Secretary	Carolyn Jarnigan Rt. 3, Box 217 Corinth, MS 38834
Treasurer	Janet Dubuisson 22410 Glad Acres Pass Christian, MS 39571
Editor: The Mississippi Kite	Jerome A. Jackson Dept. of Biological Sciences Mississippi State University Mississippi State, MS 39762
Editor: MOS Newsletter	W. Marvin Davis 308 Lewis Lane Oxford, MS 38655

MOS Memberships

Honorary	No dues
Life	\$300
Sustaining	30 (or more)
Active	15
Family	25
Library Subscriptions	10
Student/Senior	10

Membership and subscription dues should be sent to the Treasurer. The Mississippi Kite is currently published twice a year and is sent to all classes of membership.