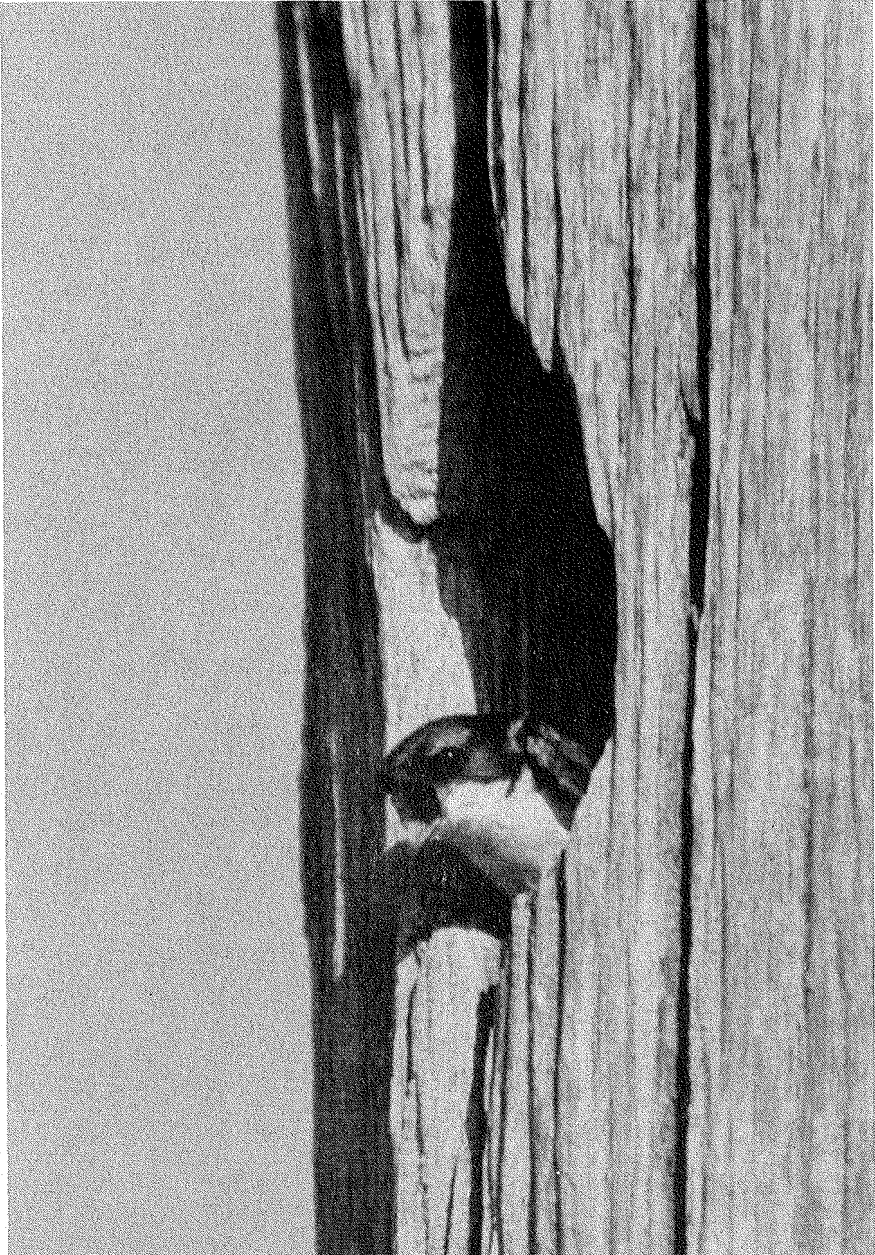


ISSN 0737-0393

THE MISSISSIPPI KITE

Vol. 25(2)

December 1995



A Periodical Published by the Mississippi Ornithological Society to Record and
Further the Study of Mississippi Birdlife.

Vol. 25, No. 2

December 1995

Contents

TREE SWALLOW: FIRST DOCUMENTED NESTING IN MISSISSIPPI ...W. Marvin Davis	16
STATUS OF HENSLOW'S SPARROWS DURING WINTER IN COASTAL MISSISSIPPI .. C. Ray Chandler and Mark S. Woodrey	20
DUAL NESTING BY FEMALE WOOD DUCKS ... Richard A. Sims	25
NESTING OF NORTHERN MOCKINGBIRDS IN AN ARTIFICIAL STRUCTURE ... William H. Turcotte	27
IN MEMORY OF ELIE GANIER ... G. Edward Alexander, Jr.	30
BIRDS AROUND THE STATE: JANUARY-DECEMBER 1994 ... compiled by Terence L. Schiefer	32
MOS OFFICERS AND MEMBERSHIP INFORMATION	... back cover

Front Cover: Adult Tree Swallow (*Tachycineta bicolor*) in an abandoned
woodpecker cavity where it apparently nested in Lafayette County,
Mississippi. Photo by W. Marvin Davis.

TREE SWALLOW: FIRST DOCUMENTED NESTING IN MISSISSIPPI

W. Marvin Davis

308 Lewis Lane
Oxford, MS 38655

The Tree Swallow (*Tachycineta bicolor*) nests broadly over North America, from the Atlantic Coast to the Pacific and northward approximately to the tree line in the Arctic. In the states nearest to Mississippi, it reaches a southern limit in far north Alabama, and has nested sparsely across the northern half of Arkansas (James and Neal 1986:242-243, Robertson et al. 1992). For Tennessee, Robinson (1990:149) described the Tree Swallow as having expanded its nesting range from about 1968 onward. Thus, it has been anticipated for several years that Tree Swallows would be found nesting in northern Mississippi.

On 24 June 1995 I saw one Tree Swallow over Sardis Lake, Lafayette Co., at Hurricane Landing. In early evening of 1 July 1995 I noticed a Tree Swallow entering a hole in a dead snag about 3 meters above the water. This was located ca. 400 meters offshore from the boat launching ramp at Coontown Crossing, also on the south shore of the lake. I later learned that "six or eight" Tree Swallows had been seen at the same site on 27 May by Vic Theobald. He saw some swallows inspecting old woodpecker holes in dead trees offshore, and thus suspected a possible nesting. On 4 July in the early afternoon, over a 45-min period of observation, I saw at least three adult Tree Swallows flying in the area. At frequent intervals they entered one apparent nest hole, presumably to feed nestlings.



Figure 1. Adult Tree Swallow feeding a recent fledgling in Lafayette Co., Mississippi.

On 7 July, Keith Meals and I approached the tree by boat and observed four adult birds. I was able to photograph adults at a nest hole and feeding a fledgling (Figure 1). Adult Tree Swallows briefly entered two old woodpecker holes located on opposite sides of the same snag, ca. 2.7 and 3.1 meters above the water level at that time. We also saw six flying immatures, which at times approached adults to solicit feeding, although none was seen to be fed. Three days later no swallows could be seen in the vicinity. Copies of photographs taken on 7 July are on file in the Zoological Collections, Mississippi State University and with the Mississippi Museum of Natural History.

A report of an isolated, nesting by "a colony" of Tree Swallows was given by Lowery (1974:440-441) for Louisiana, but essentially on the Louisiana-Mississippi state line. The record, for which no details, dates (even year) or observer were given, was on Eagle Lake, which is an old Mississippi River cut-off that lies east of the current channel. It is nearly surrounded by northern Warren Co. This record is also the apparent basis for Imhof's (1976:274) statement that the Tree Swallow nests "casually south to Louisiana and Mississippi." However, the Bird Records Committee of MOS has never accepted the Tree Swallow as a nesting species.

Another report of possible nesting by Tree Swallows along the Mississippi River came from Claiborne Co., Mississippi below the mouth of the Big Black River. A party of fisheries biologists doing a biological survey about 1969, before construction of Grand Gulf nuclear power plant, reported later (to W.H. Turcotte) having seen Tree Swallows at nest holes in dead trees along the river (personal communication., W.H. Turcotte, 21 July 1995). However, they did not report verifying the nesting by having observed eggs, nestlings or fledglings, nor were photos or specimens provided. Thus, the 1995 nestings provide the first documented record of the Tree Swallow nesting in Mississippi.

Acknowledgments

I appreciate the observations provided by Vic Theobald and for aid in access provided by Keith Meals, both of the Mississippi Department of Wildlife, Fisheries and Parks.

Literature Cited

- Imhof, T.A. 1976. Birds of Alabama. University of Alabama Press, University.
- James, D.A. and Neal, J.C. 1986. Arkansas birds: their distribution and abundance. Univ. of Arkansas Press, Fayetteville.
- Lowery, G.H. 1974. Louisiana birds. 3rd ed. Louisiana State Univ. Press, Baton Rouge.
- Robertson, R.J., Stutchbury, B.J., and Cohen, R.R. 1992. Tree Swallow. Birds of North America, No. 11, A. Poole, P. Stettenheim, and F. Gill, eds. The Academy of Natural Sciences, Philadelphia, and The American Ornithologists' Union, Washington, DC.
- Robinson, J.C. 1990. An annotated checklist of the birds of Tennessee, Univ. Tennessee Press, Knoxville.

STATUS OF HENSLOW'S SPARROWS DURING WINTER IN COASTAL MISSISSIPPI

C. Ray Chandler

Department of Biology
Georgia Southern University
Statesboro, Georgia 30460-8042

and

Mark S. Woodrey

Mississippi Museum of Natural Science
Mississippi Department of Wildlife, Fisheries, and Parks
111 N. Jefferson St.
Jackson, Mississippi 39202

The Henslow's Sparrow (*Ammodramus henslowii*) winters along the Atlantic and Gulf coasts of the southeastern United States (American Ornithologists' Union 1983, Root 1988). However, the combination of apparent low densities and furtive behavior make it difficult to assess the precise winter distribution and abundance of this species (Hyde 1939, Root 1988). In coastal Mississippi, Henslow's Sparrows are considered "rare" to "extremely rare" winter visitors with no more than 15 total observations (Toups and Jackson 1987). Christmas counts in coastal Mississippi rarely report this species, and Hyde (1939:23) described Mississippi as lying outside the "region of abundance" on the winter range.

As part of a study of bird communities in coastal pine savannas, we have had the opportunity to quantify the occurrence of Henslow's Sparrows during winter in coastal Mississippi. Our work suggests the Henslow's Sparrow is far more common in fire-maintained savannas and open woodlands than existing records suggest; at some of our savanna study sites Henslow's Sparrows were among the most common winter residents. The purpose of this paper is to clarify the status and habitat use of Henslow's Sparrows in coastal Mississippi.

We also report measurement data for Henslow's Sparrows wintering in coastal Mississippi.

Study site.-- Between 20 November 1994 and 25 February 1995, we regularly censused nine 25-ha (500 m x 500 m) study plots on the Mississippi Sandhill Crane National Wildlife Refuge, Jackson County, Mississippi. The refuge harbors some of the best remaining examples of coastal pine savanna in the United States (Frost et al. 1986). These savannas are characterized by a sparse overstory of pines (mostly longleaf pine, *Pinus palustris*, and slash pine, *P. elliotii*) and an open herbaceous understory (mostly grasses and sedges). Our study plots were located on sites ranging from open (nearly treeless) savannas to thicker woodlands with woody plants (*Ilex*, *Smilax*, etc.) Encroaching on the herbaceous understory. All sites were characterized by moist to wet soil and were burned at approximately 3-year intervals. Time since burning ranged from 1 month to 3 years on our nine study plots.

We censused sites weekly by walking an irregular transect for one hour within the boundaries of the 25-ha study plots. This method allowed us to measure relative abundance for each species (individuals/plot/hour) and to assess *minimum* density on the study plots. Walking an irregular route over a fixed time period gave us the flexibility to pursue furtive, grass-dwelling birds that point counts or fixed transects did not provide.

In addition to regular censusing, we used mist nets to capture Henslow's Sparrows for banding on selected study plots during January and February 1995. For each individual we measured unflattened wing chord and tail length to the nearest 0.5 mm with a ruler, tarsus length and culmen length to the nearest 0.1 mm with dial calipers, and body mass to the nearest 0.5 g with a Pesola spring scale (Table 1).

Results

We recorded this species on 6 (67%) of our 9 study sites at the crane refuge during the winter of 1994-95. The only sites where Henslow's Sparrows did not occur were sites that had been burned within the previous 2-3 months. On the six sites where they occurred (all burned 1-3 years earlier), maximum

counts of Henslow's Sparrows (individuals/plot/hour) ranged from 1-9 (mean = 3.7). Although these data suggest that Henslow's Sparrows are far more common than birding and Christmas Count records indicate, our banding results showed that even our censuses were underestimates of their true abundance. We banded Henslow's Sparrows on three of the six plots on which they occurred. At our Simm's Road site (where we recorded a maximum of 9 Henslow's Sparrows during weekly censuses), we banded 16 individuals in just over five hours of netting. At the Headquarters site (maximum of 7 birds on weekly counts) we banded 10 Henslow's Sparrows in about three hours. On the Church site (maximum census of 3 birds) we banded 7 Henslow's in about 2.5 hours. We banded 33 Henslow's Sparrows on the refuge (Table 1), suggesting that, at best, we were recording only 42-70% of them at a given site.

Table 1. Standard measurements of 33 Henslow's Sparrow's captured at the Mississippi Sandhill Crane National Wildlife Refuge, Jackson Co., Mississippi, January-February 1995.

	Wing Chord (mm)	Tail (mm)	Tarsus (mm)	Culmen (mm)	Body Mass (g)
Mean	52.2	48.8	16.7	13.0	7.4
SE	0.33	0.36	0.15	0.16	0.07
Range	46-55	45-54	14-18	11.5-15.5	6.6-8.2
CV	3.6%	4.1%	5.2%	6.9%	5.2%

Discussion

Our results highlight the difficulty of using traditional sources of data (birding records, Christmas Bird Count data) to assess the status of furtive species such as the Henslow's Sparrow. For example, 1994-95, the Henslow's Sparrow was not recorded on the Christmas Bird Count that includes our study sites. Adequate monitoring of Henslow's Sparrows will require intensive field

work directed specifically at pine savannas, despite the fact that these savannas have low bird diversity in winter. Although this field work yields few species per unit time, it has the potential to clarify the status of Henslow's Sparrows wintering in Mississippi as well as that of other little known species such as the Yellow Rail (*Coturnicops noveboracensis*).

Pine savannas seemed to become suitable for Henslow's Sparrows in the winter following that in which they are burned (prescribed burning on the crane refuge takes place in the non-growing season). Henslow's Sparrows then appeared to inhabit savannas until encroachment of woody vegetation eliminated the herbaceous understory (approximately three to five years after burning) or until the savanna was burned again. In coastal Mississippi, Henslow's Sparrows seem dependent on a narrow "window" of habitat availability created by fire. However, other open habitats such as power-line corridors may offer suitable habitat as well. Overall, our work suggests that the Henslow's Sparrow is an uncommon winter resident in coastal Mississippi, but that it is locally common in suitable habitat.

Acknowledgments

This work would not have been possible without the skilled field assistance of Jeff Clark, Michelle Davis, Doug Faulkner, Andy Kinsey, and Stephen Sorensen. The staff of the Mississippi Sandhill Crane NWR have been instrumental in making our research possible. We especially thank Joe Hardy, Dwight Cooley, Scott Hereford, and Tony Wilder for their help. Richard Coon and Chuck Hunter of the U.S. Fish & Wildlife Service have also facilitated our work. This research was supported by the U.S. Fish & Wildlife Service and the Mississippi Museum of Natural Science.

Literature Cited

- American Ornithologists' Union. 1983. Check-list of North American birds. 6th edition. American Ornithologists' Union, Lawrence, Kansas.
- Frost, C.C., J. Walker, and R.K. Peet. 1986. Fire-dependent savannas and

prairies of the Southeast: original extent, preservation status and management problems. Pp. 348-357, in D.L. Kilhavy and R.N. Conner, eds., *Wilderness and Natural Areas in the Eastern United States: A Management Challenge*. School of Forestry, Stephen F. Austin State University, Nacogdoches, Texas.

Hyde, A.S. 1939. The life history of Henslow's Sparrow, *Passerherbulus henslowi* (Audubon). University of Michigan, Misc. Publ. Mus. Zool., No. 41.

Root, T. 1988. Atlas of wintering North American birds. University of Chicago Press, Chicago, Illinois.

Toups, J.A., and J.A. Jackson. 1987. Birds and birding on the Mississippi coast. University Press of Mississippi, Jackson, Mississippi.

DUAL NESTING BY FEMALE WOOD DUCKS

Richard A. Sims

Science Department
Jones County Junior College
900 Front St.
Ellisville, Mississippi 39437

This report involves the observation of 15 Wood Duck (*Aix sponsa*) boxes on a 28.3 ha lake in southern Jones County, Mississippi. The boxes are constructed of wood and mounted on 2.4 m landscape timbers near the edge of the lake. The inside measurements of each box are about 28 X 28 X 59 cm.

Egg laying began on 25 April, 1995 in Box No. 13. On 9 May the same box contained 31 eggs, about twice the normal 11-15 egg clutch size of one female Wood Duck as reported by Semel and Sherman (1986). Apparently this was a dump nest in which at least two birds were contributing eggs. The eggs were cool to the touch, indicating that incubation had not yet begun. On 19 May the same box contained 34 eggs that were being incubated. As the box was approached on 28 May, one female flew out followed by another female, suggesting that both were incubating the 34 eggs in the nest. On two other occasions (2 and 7 June) both females were observed incubating side by side in the box. On 10 June, 26 ducklings fledged from the box. Both females called the brood from the box, but darkness prevented the observer from determining the number of ducklings that accompanied each.

Dual nesting by female Wood Ducks has been reported by Bellrose (1943), Fuller and Bolen (1963) and Clawson (1975), but this behavior is rare. Females frequently share nest boxes while laying eggs; this is a type of intraspecific nest parasitism called dump nesting, but they are quite intolerant of each other during egg incubation (Clawson, et. al., 1979). Among the factors contributing to dump nesting are increased nest densities (Clawson, et.al.,1979), conspicuousness of location (McCamant and Bolen, 1979), and relatedness between females (Andersson and Eriksson, 1982). All the boxes in the area are located in prominent locations around the edge of the lake, in easy view of the

ducks. The female cohabitants in the nest box apparently dump nested in the box and might have been related (sisters or mother-daughter), although information regarding these inferences is inconclusive.

Morse and Wight (1969) and Heusmann et al. (1980) presented evidence that dump nesting contributes to the Wood Duck population by increasing the production of young. The relatively large number of hatchlings (26) suggests that dual nesting might also be beneficial to the population in the same manner. This is more than twice the average number (12.1) of ducklings hatched from a dump nest by a single female (Morse and Wight 1969).

Literature Cited

- Andersson, M., and M.O.G. Eriksson. 1982. Nest parasitism in Goldeneyes *Bucephala clangula*: some evolutionary aspects. *Am. Nat.* 120:1-16.
- Bellrose, F. 1943. Two Wood Ducks incubating in the same nesting box. *Auk* 60: 446-447.
- Clawson, R.L. 1975. Two female Wood Ducks call brood from nest box. *Wilson Bull.* 87: 427-428.
- Clawson, R.L., G.W. Hartman, and L.H. Fredrickson. 1979. Dump nesting in a Missouri Wood Duck population. *J. Wildl. Manage.* 43: 347-355.
- Fuller, R.W., and E. Bolen. 1963. Dual Wood Duck occupancy of a nesting box. *Wilson Bull.* 75: 94-95.
- Heusmann, H.W., R. Bellville, and R.G. Burrell. 1980. Further observations on dump nesting by Wood Ducks. *J. Wildl. Manage.* 44: 908-915.
- Morse, T.E. and H.M. Wight. 1969. Dump nesting and its production in Wood Ducks. *J. Wildl. Manage.* 33: 284-293.
- Semel, B., and P.W. Sherman. 1986. Dynamics of nest parasitism in Wood Ducks. *Auk* 103: 813-816.

Nesting of Northern Mockingbirds in an Artificial Structure

William H. Turcotte

240 Lowe Circle
Richland, Mississippi 39218

On 10 April 1995, I saw a Northern Mockingbird (*Mimus polyglottos*) at a martin gourd nailed under the eaves at the peak of a small shed at our home in Richland, Mississippi. The gourd was cut away in front, leaving a saucer-like cup (Figure 1). I had placed it there early in 1993 as a possible nest site for Barn Swallows (*Hirundo rustica*) that nest under a nearby bridge. On 17 April the mockingbirds had built a nest in the gourd shortly before we left on an extended trip. My brother-in-law, Robert Diffenderfer, while working part of our garden, watched the gourd nest almost daily. He saw adults feeding young in the nest and saw two young of the brood that fledged a day or two before our return on 12 May. Afterwards we saw adults feeding at least two flying young. The same pair [apparently] renested and fledged a brood of four young from a nearby nest about 20 June.

On 4 April 1996, after I removed the earlier nest from the gourd, I watched mockingbirds build a new nest in the gourd. It was completed on 10 April. We did not disturb the birds during incubation or when they were being fed. On 4 May we could see four young in the nest and all fledged that day. Photographs (Figures 1 and 2) were taken on 4 May.

Four flying and completely feathered young were still being fed by both adults on 30 May. The same pair of adults on the same date had a new nest and a clutch of four eggs in a muscadine (*Vitis*) vine about 40 m from the gourd nest. The gourd nest and vine nest were constructed of similar materials. Twigs bearing lichens formed the basal structure, then soft materials, including the woolly stems of a common weed known as "rabbit tobacco" were added to the base. Both nests were lined with rootlets.

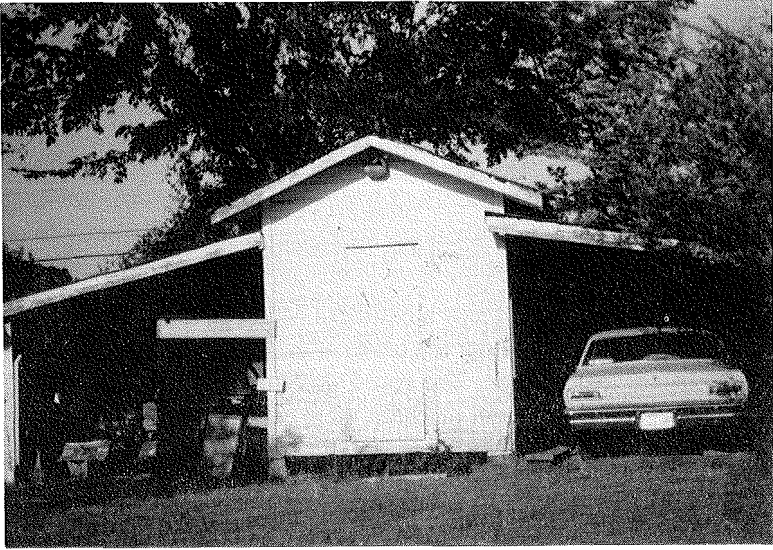


Figure 1. Gourd attached to the peak of the shed where Northern Mockingbirds nested.

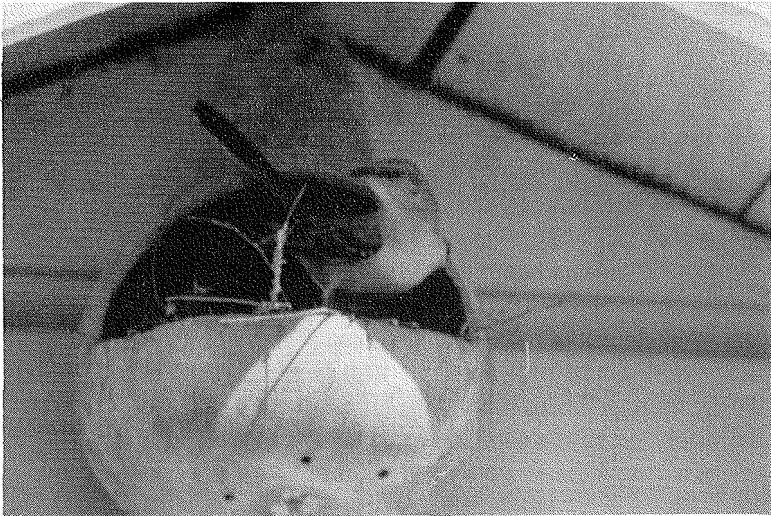


Figure 2. Northern Mockingbird at its nest in a gourd.

I have known of only one other mockingbird nest placed on an artificial structure. It was an old nest that I found placed in the top of a hollowed fence post supporting barbed wire and covered with vines that would have concealed it from view. Alexander Sprunt (1948. Pp. 295-315 *in* A.C. Bent, *Life Histories of North American Nuthatches, Wrens, Thrashers, and Their Allies*. U.S. Natl. Mus. Bull. 195) notes that mockingbirds will rarely nest in a bird house.

IN MEMORY OF ELIE GANIER

G. Edward Alexander, Jr.

346 S. Gamwyn Dr.
Greenville, Mississippi 38701

Elie J. Ganier, Jr. of Percy, Mississippi, and a life member of the Mississippi Ornithological Society, passed away 22 November 1995. He was the nephew of A.F. Ganier from Tennessee, who was recognized as one of Tennessee's outstanding ornithologists.

Elie and his lovely wife Jane actively participated in every single one of the Washington County (South) Christmas Counts since our first Count was held on 2 January 1972. Elie was a very quiet, understated person. He was a man of few words, but when he spoke he always had something significant to say. I remember one Christmas Count where, as usual, we met at Leroy Percy State Park for lunch. After we tallied the morning results, Elie raised his hand a quietly said "I had a bird that you didn't call out... I had a Surf Scoter on Deer Creek." And he had a Surf Scoter!

There were other significant contributions that he made to our Count, notably his discovery of a Burrowing Owl, an Oldsquaw, and a Lark Sparrow. He always had Brewer's Blackbirds, and I'm afraid we may be in trouble in the future without his help in finding them.

Back in the early sixties I was in the construction business and was working on his parent's home in Percy. Elie had a huge pair of binoculars and I remember he showed me a hummingbird nest. It is the only hummingbird nest I have ever seen. I believe that was the beginning of my interest in ornithology.

Later in the seventies Elie called me one day to tell me that he had a Sandhill Crane on his farm and he invited me down to see it. It was Springtime and all the farmers were cutting over their land and preparing their fields for

and all the farmers were cutting over their land and preparing their fields for planting. Elie refused to cut over about 25 acres until the crane decided to leave. I went down and was able to flush the crane in an area where the vegetation was over my head. I will never forget the thrill of watching that huge bird lift off, although it nearly scared me to death at the time.

I feel that I owe much to Elie Ganier concerning my own interest in birds. I knew him to be a fine businessman, an avid amateur ornithologist, the epitome of a Southern gentleman, and my very good friend. He will be missed by all of us.

BIRDS AROUND THE STATE: JANUARY-DECEMBER 1994

Compiled by Terence L. Schiefer

Department of Entomology
Mississippi State University
Mississippi State, Mississippi 39762

The following is a summary of noteworthy bird sightings in Mississippi for the period 1 January through 31 December 1994. The sequence of information in each account is: species, number, date, place, observer(s). Numbers of birds sighted are underlined. The significance of sightings is indicated by a letter in parentheses following a record. These letters are as follows: (A) = arrival date, (D) = departure date, (E) = early date, (L) = late date, (N) = unusually large number, (R) = species rare in area or at that season. Other abbreviations used include the following: ad = adult; CBC = Christmas Bird Count; Co. = County; cos. = counties; f = female/s; Hwy. = Highway; imm = immature/s; Is. = Island/s; m = male/s; max. = maximum; mi = mile/s; m.ob. = many observers; MSU = Mississippi State University; NWR = National Wildlife Refuge; pl = plumage; pr = pair/s; PRM = Pascagoula River Marsh; Ref. = Refuge; Rd. = Road; S.L. = Sewage Lagoon; S.P. = State Park; sp. = species; USFWS = United States Fish and Wildlife Service; WMA = Wildlife Management Area. The list of sightings is followed by a key to observers' initials and a gazetteer of localities.

Contributions of records are welcome from anyone who makes observations of Mississippi birds. Only with the assistance of many individuals from throughout the state over a period of years can we come to understand the dynamics of the bird populations of Mississippi. Contributors should submit records on 3" x 5" cards or similar-sized slips of paper with one record per card including the following information: species, number seen, date (including year), location (state, county and specific location), observer(s), and details and significance of observation. Very unusual records should be accompanied by

full details including description of bird, details of observation, and explanation of how similar species were eliminated. While records are welcome at any time, those received by 15 March, 15 June, 15 August, and 15 December will be submitted with the seasonal report to Audubon Field Notes (formerly American Birds) as well as being considered for use in The Mississippi Kite. Please send all records to:

Terence L. Schiefer
Mississippi State University
Department of Entomology
P. O. Box 9775
Mississippi State, MS 39762-9775

RED-THROATED LOON -- 1, 17 Dec., Bellefontaine Beach, LG, TG (R)

COMMON LOON -- 1 in alternate pl, 13 May, 12 mi east of Batesville, GK, VT (L); 1, 26 Oct., Oktibbeha Co. Lake, TS (A); 2, 31 Dec., Whites Creek Reservoir, Eupora, TS, MS (L)

PIED-BILLED GREBE -- 182, 17 Jan., Whites Creek Reservoir, Eupora, TS (N); 2-7 ad, 3-8 young, 27 May-20 Jul., USFWS Robertson property, Leflore Co., TJ; 1 ad, 27 Jun., southeastern Panola Co., GK (R)

HORNED GREBE -- 44, 12 Nov., Arkabutla Lake, Tate & DeSoto cos., RP, WP (N)

EARED GREBE -- 1, 22 Jan., 2, 24 Jan., Sardis Dam, GK, SK (R); 1 in alternate pl, 30 Apr., Sibley Farms, TS, MS (R); 4, 22 Aug., 1, 26 Aug., 5, 20 Sep., Oktibbeha Co. Lake., TS (R); 2, 28 Aug., Eupora S.L., TS (R)

AMERICAN WHITE PELICAN -- 4, 1-5 Jan., 3, 8 Jan., Loakfoma Lake, TS, MC, m.ob. (R); 175, 29 Apr., near Eagle Lake, Warren Co., TS, MS (N); 400, 1 Oct., Tunica Cutoff, Tunica Co., RP (N); 13, 1 Oct., 500, 12 Nov., Arkabutla Lake, Tate & DeSoto cos., RP, WP (N); 1, 9-15 Oct., Loakfoma Lake, TS, MS

(R); 125, 7 Nov., Sardis Lake, Lafayette Co., MD (N); 800, 3 Dec., Arkabutla Lake, Tate & DeSoto cos., RP, WP (N); 7, 7 Dec., Loakfoma Lake, DC (R)

DOUBLE-CRESTED CORMORANT -- 1, 17 Jun.-28 Jul., Bluff Lake, Noxubee Co., TS (R); 1, 19 Jul., Columbus Lake, Lowndes Co., TS (R); 77, 7 Sep., Sardis Lake, Lafayette Co., MD (A,N); 11, 9 Sep., Little Texas fish farm, MD (A); 1350, 29 Oct., Sardis Lake, Lafayette Co., MD (N)

ANHINGA -- 1, 20 May, South Unit Tallahatchie NWR, Grenada Co., TJ (R); 1-9, 27 May-19 Aug. (15 dates), USFWS Robertson property, Leflore Co., TJ (R); 2 pr, 11 Jun., Hwy. 330, Calhoun Co., GK, SK (R - two nests seen); 6, 9 Jul., Bluff Lake, Oktibbeha & Noxubee cos., MC (R); 1, 6 Aug., near Hickory, JM (R); 3, 31 Aug., Bluff Lake, Noxubee Co., TS (R); 1, 23 Sep., near Adaton, Oktibbeha Co., MS (R)

AMERICAN BITTERN -- 4, 13 Apr., Noxubee NWR, Winston Co., TS (N); 1, 21 Aug., Sardis S.L., MD (E)

LEAST BITTERN -- 1-3, 27 May-23 Jun., USFWS Robertson property, Leflore Co., TJ (R); 6, 24 Apr., Ross Barnett Reservoir, Madison Co., GK, SK, JW, KH (N)

GREAT BLUE HERON -- 30+ birds, 20+ nests, 30 May, Hwy. 330 pond, Calhoun/Yalobusha Co. line, GK, SK (N)

GREAT EGRET -- 12, 26 Mar., Blocker's Bottom, TS (A); 4, 28 Mar., A & D Turf Farm, GK, SK (A); 2, 30 Mar., Panola Co., GK; 222, 23 Jul., Tunica Co., RP, WP (N); 2000, 11 Sep., east of Belzoni on Hwy. 12, MD (N)

SNOWY EGRET -- 2, 16 Oct., Noxubee NWR, Noxubee Co., TS (L)

LITTLE BLUE HERON -- 6 imm (pied), 27 May, near South Unit Tallahatchie NWR, Grenada Co., TJ

TRICOLORED HERON -- 1 in full nuptial pl, 30 Apr., Sibley Farms, TS, MS (R); 1, 1 Sep., Loakfoma Lake, TS (R)

CATTLE EGRET -- 1-43, 17-31 Dec., (max. 43, 30 Dec.), Oktoc Rd., Oktibbeha Co., MC, m.ob. (R)

GREEN HERON -- 1 imm, 4 Nov., Starkville south S.L., MS (D)

BLACK-CROWNED NIGHT-HERON -- 3 ad, 6 imm, 9 Sep., Loakfoma Lake, TS (N)

YELLOW-CROWNED NIGHT-HERON -- 1-2 imm, 15 & 21 Jul., USFWS Robertson property, Leflore Co., TJ

GLOSSY IBIS -- 3, 30-31 Aug., Oktoc Rd., Oktibbeha Co. & Bluff Lake, Noxubee Co., TS (R)

WHITE-FACED IBIS -- 2, 23 Oct., Seaman Rd. S.L., TS (R)

Plegadis sp. -- 1, 28 Jul., Hwy. 465 west of Hwy. 61, Warren Co., KM (R); 2, 28 Sep., Yazoo NWR, EA (R); 1, 9 Oct., Loakfoma Lake, TS, MS (R)

ROSEATE SPOONBILL -- 1 imm, 31 Jul., South Beach, Hancock Co., GK, SK (R)

WOOD STORK -- 1, 17 Jun., Bluff Lake, Noxubee Co., TS (A); 27, 21 Aug., Mississippi River levee, Bolivar Co., JBu

TUNDRA SWAN -- 1 imm, 1-24 Jan., Noxubee NWR, Noxubee Co., TK, TS, m.ob. (R); 1 imm, 5 Jan.-6 Feb., Starkville south S.L., TS, m.ob. (R); 1 imm, 28 Jan.-15 Apr., Oktoc Rd., Oktibbeha Co., MC, TS, m.ob. (R); 1 imm, 27 Dec., Sardis Waterfowl Ref., GK, SK (R)

GREATER WHITE-FRONTED GOOSE -- 3-4, 7-19 Feb., Oktoc Rd., Oktibbeha Co., TS, m.ob. (R); 38, 23 Dec., Sardis Waterfowl Ref., GK, VT, PH (R)

SNOW GOOSE -- 115, 7 Jan., near Hickory, JM; 1 ad, 16 Sep., Sardis Waterfowl Ref., MD (E)

ROSS' GOOSE -- 20+, 16 Jan., 3, 22 Jan., 10, 6 Feb., 5, 13 Feb., 6, 20 Feb., Tunica Co., JW, m.ob. (R); 1 imm, 6 Feb.-4 Mar., Oktoc Rd., Oktibbeha Co., TS, m.ob. (R); 4 ad, 1 imm, 12 Feb., 3 mi northeast of Macon, TS (R); 3 ad, 15 Dec., Tunica Co., JW, GK (R)

CANADA GOOSE -- 7 small race, 7 & 17 Feb., Oktoc Rd., Oktibbeha Co., TS, MC (R); 200, 1 Jul., Oktibbeha Co. Lake, TS (N)

BLUE-WINGED TEAL -- 1 pr, 5 Jan.-1 Feb., Starkville south S.L., TS (R); 1 m, 17 Jan., Grenada S.L., GK, TS, KH, PH (R); 1 f, 20 Jan., Water Valley S.L., GK (R); 1 f, 8-21 Feb., Oktoc Rd., Oktibbeha Co., TS (R); 2, 14 May, Blocker's Bottom, MC, MG, DP, CL (L); 30, 29 Sep., near Hickory, JM (N); 2, 2 Dec., Yazoo NWR, TS (R); 10, 8 Dec., 15, 17 Dec., Blocker's Bottom, TS, RK (R); 2, 20 Dec., Grenada CBC, Grenada Co., DK, AM, TJ (R)

NORTHERN SHOVELER -- 5, 20 Aug., Little Texas, GB, RP (E)

AMERICAN WIGEON -- 250, 9 Oct., Sardis Waterfowl Ref., MD (N)

CANVASBACK -- 1, 27 Oct., Oktibbeha Co. Lake, TS (A)

RING-NECKED DUCK -- 3, 9 Oct., Oktibbeha Co. Lake, TS (A)

GREATER SCAUP -- 6+, 1 Jan.-28 Feb., Tunica Co. fish ponds, JW, m.ob. (R); 20, 25 Oct., Oktibbeha Co. Lake, TS (A)

LESSER SCAUP -- 700, 27-28 Mar., Oktibbeha Co. Lake, TS (N); 1 m, 31 Mar.-20 Jun., MSU North Farm S.L., TS (L)

OLDSQUAW -- 1 f, 31 Dec., Hattiesburg S.L., TG, LG (R)

BLACK SCOTER -- 11, 11 Nov., 2, 24 Nov., Oktibbeha Co. Lake, TS, MS (R)

SURF SCOTER -- 1 ad m, 19 Jan., Sardis Dam, GK, PH (R); 3 imm m, 2 imm f, 21 Jan., Grenada Dam, GK (R); 1, 3 Nov., Oktibbeha Co. Lake, TS (R); 2,

12 Nov., Oktibbeha Co. Lake, TS, MG (R); 3, 11 Dec., Oktibbeha Co. Lake, TS, MS (R); 2 f/imm, 27 Dec., Oktibbeha Co. Lake, TS, MS (R)

WHITE-WINGED SCOTER -- 2, 22 Jan., Sardis Dam, GK, JW (R)

HOODED MERGANSER -- 2, 26 Oct., Oktibbeha Co. Lake, TS (A)

COMMON MERGANSER -- 3 m, 4 f, 19-22 Jan., Sardis Dam, GK, PH SK, JW (R); 2 m, 27 Dec., Bayou Caddy, Hancock Co., JT, DM (R)

RED-BREASTED MERGANSER -- 4, 31 Jan., 1, 13 Feb., Oktibbeha Co. Lake, TS (R); 59, 11 Nov., Oktibbeha Co. Lake, TS (N)

RUDDY DUCK -- 1, 18 Sep., Hwy. 12 west of Belzoni, MD (A)

OSPREY -- 1, 5 May, MSU Golf Course, TS (L); 1, 17 Dec., Grenada Lake, Yalobusha Co., MD (L); 1, 31 Dec., Thornburg Lake, Adams Co., DA (R)

AMERICAN SWALLOW-TAILED KITE -- 1, 13 Jun., Chickasawhay River X Hwy. 42, Greene Co., TS (R)

MISSISSIPPI KITE -- 1 ad, 14 May, MSU North Farm, MC, DP, MG, CL (R); 1 ad, 30 Jun., Luxapallila Creek, Columbus, TS (R); 1 ad, 20 Aug., near Shuqualak, Noxubee Co., MS (R); 1, 13 Oct., Jackson, Hinds & Rankin cos., WT (L)

BALD EAGLE -- 2 ad, 4 imm, 5 Jan., Noxubee NWR, Noxubee Co., TS (N); 20 ad, 10 imm, 22 Jan., Sardis Dam, GK, SK, PH (N); 2 ad, 2 Mar., 2 ad, 1 imm, 24 Apr., Ross Barnett Reservoir, Madison Co., GK, SK, JW (R - nesting); 2 ad, 1 imm, 24 Apr., Eagle Lake, Warren Co., GK, SK, JW (R - nesting)

NORTHERN HARRIER -- 80+, 30 Jan., Tunica Co., JW, GK (N)

SHARP-SHINNED HAWK -- 1, 19 Aug., 1, 9 Sep., Madison's Lake, DeSoto Co., RP, WP (E)

COOPER'S HAWK -- 1, 30 May, MSU North Farm, TS (R); 1 ad m, 20 Jun., southeast of Oxford, GK, SK (R); 1 ad m, 26 Jun., northeast of Water Valley, GK, SK (R); 1, 8 Jul., MSU South Farm, TS (R); 1 ad m, 12 Jul., 5 mi west of Oxford, GK (R); 1 ad f, 24 Jul., Paris, GK, PH (R)

BROAD-WINGED HAWK -- 30, 30 Sep., North Unit Tallahatchie NWR, Quitman Co., TJ; 1, 9 Oct., near Noxubee NWR, Oktibbeha Co., TS, MS (L)

GOLDEN EAGLE -- 1 imm, 22 Jan., Sardis Waterfowl Ref., VT (R); 1, 17-18 Dec., Blocker's Bottom, MC, TS, MS (R)

AMERICAN KESTREL -- 1 pr, 26 May, A & D Turf Farm, GK, SK, PH (R)

MERLIN -- 1, 23 Oct., Port Bienville, TS, MS (R); 1 f/imm, 1 Dec., MSU North Farm, MS (R)

PRAIRIE FALCON -- 1 f, 6 Nov.-31 Dec., George Payne Cossar S.P., GK, SK (R - 4th winter at this location)

PEREGRINE FALCON -- 1 imm, 17 Sep., Sardis Waterfowl Ref., MD (R); 1 f, 25 Sep., Water Valley S.L., GK, SK (R); 1 imm, 30 Sep., North Unit Tallahatchie NWR, Quitman Co., TJ; 1 imm, 1 Oct., Bluff Lake, Noxubee Co., MS, TS (R); 1, 15 Oct., Hwy. 12, Humphreys Co., MD, DH, TM (R); 1, 15 Oct., Yazoo NWR, MD, DH, TM (R)

YELLOW RAIL -- 1, 4 Jan., Mississippi Sandhill Crane NWR, CCh, MW, DF (R)

KING RAIL -- 1 ad, 2 downy young, 20 May, North Unit Tallahatchie NWR, Quitman Co., TJ (R); 1-2, 10 Jun.-26 Jul. (5 dates), USFWS Robertson property, Leflore Co., TJ, FM (R); 1, 23 Jul., Sullivan Rd. Catfish Ponds, Tunica Co., RP, WP (R)

VIRGINIA RAIL -- 1, 17 Jan., Grenada S.L., GK, TS, KH, PH (R); 1, 17 Dec., Noxubee NWR, Winston Co., TS, MS, DBr, LM (R); 4, 20 Dec., Grenada S.L., DK, AM, TJ (R)

SORA -- 4, 17 Jan., Grenada S.L., GK, TS, KH, PH (R); 1, 6 Dec., USFWS Bowling property, Sunflower Co., TJ (R); 3, 20 Dec., Grenada S.L., DK, AM, TJ (R)

COMMON MOORHEN -- 2, 31 Dec., Ross Barnett Reservoir, Madison Co., AM, SP (R)

AMERICAN COOT -- 1, 19 Oct., near Hickory, JM

SANDHILL CRANE -- 9, 7 Jan., A & D Turf Farm, VT (R); 5 ad, 1 imm, 30 Jan.-4 Feb., northwest of Hwy. 3 X Hwy. 4, Tunica Co., JW, GK (R); 5, 24 Nov., 12.5 mi east of Macon, TS, MS (R)

BLACK-BELLIED PLOVER -- 1 in alternate pl, 4 May, 1 in basic pl, 27 May, A & D Turf Farm, GK (R)

AMERICAN GOLDEN-PLOVER -- 23, 9 Mar., 1, 3 May, A & D Turf Farm, GK, SK (A,L)

SEMIPALMATED PLOVER -- 5, 3 May, A & D Turf Farm, GK, SK, MD; 4, 27 Jul., Loakfoma Lake, TS (A); 1, 1 Oct., North Unit Tallahatchie NWR, Quitman Co., TJ, MD (D)

BLACK-NECKED STILT -- 1 m, 30 Apr., near Bass Landing, DeSoto Co., GK, SK, JW (R); 6, 20 May, USFWS Wilkins property, Sunflower Co., TJ (R); 7, 11 Jun., 5 pr, 19 Jun., 4 ad, 3 imm, 10 Jul., Tippo, GK, SK, PH (R - one female on nest 19 June); 3, 23 Jul., near Dooley, Hwy. 3, Tunica Co., RP, WP (R); up to 50, 27 Aug.-28 Sep., Yazoo NWR, EA (N); 130, 10 Sep., Belzoni, GK, SK (N)

AMERICAN AVOCET -- 6, 21 Aug., Loakfoma Lake, TS, MC (R); 1 imm, 7 Sep., Tippo, GK, PH (R); 1, 17 Oct., Sardis Lake, Lafayette Co., RB, VT, GK (R); 1, 25 Oct., 9, 28 Oct.-3 Nov., North Unit Tallahatchie NWR, Quitman Co., TJ, GK, SK (R)

GREATER YELLOWLEGS -- 2, 22 Jan., 13, 30 Jan., 7, 20 Feb., Tunica Co., JW, m.ob. (R); 1, 12 Feb., 8 mi east of Macon, TS (R); 1, 20 May, Blocker's

Bottom, TS (L); 1, 13 Jul., Bluff Lake, Noxubee Co., TS (A)

LESSER YELLOWLEGS -- 4, 9 Jan., 3, 20 Feb., Tunica Co., JW, m.ob. (R); 1, 28 Feb., Noxubee NWR, Noxubee Co., TS (A)

SOLITARY SANDPIPER -- 1, 10 May, MSU North Farm, TS (D); 1, 5 Oct., Starkville south S.L., TS (L)

WILLET -- 5, 19 Apr., Bluff Lake, Noxubee Co., TS (R); 10+, 25 Apr., Loakfoma Lake, TS (R)

SPOTTED SANDPIPER -- 1, 21 Jan., Enid Dam, GK (R); 3, 13 Jul., Oktibbeha Co., TS (A); 1, 18 Nov., Starkville south S.L., TS (L); 1, 3 Dec., Arkabutla Lake, Tate & DeSoto cos., RP, WP (R)

UPLAND SANDPIPER -- 1, 5 May, A & D Turf Farm, GK (L); 1, 12 Aug., A & D Turf Farm, GK (A)

RUDDY TURNSTONE -- 1, 2 Aug., Loakfoma Lake, TS (R)

SANDERLING -- 1 ad, 27 Jul., Loakfoma Lake, TS (R); 1, 1 Sep., Sardis Waterfowl Ref., MD (R)

SEMIPALMATED SANDPIPER -- 5, 11 Jun., Tippo, GK, SK (L); 1, 22 Jul., Starkville south S.L., TS (A)

WESTERN SANDPIPER -- 3, 9 Jan., 2, 13 Feb., Tunica Co., JW (R); 7 ad, 11 Jul., Starkville south S.L., TS (A)

LEAST SANDPIPER -- 248, 9 Jan., 5-58, 16 Jan.-20 Feb., Tunica Co., JW, m.ob. (N); 1, 20 May, Starkville south S.L., TS (L); 5 ad, 11 Jul., Starkville south S.L., TS (A)

WHITE-RUMPED SANDPIPER -- 2, 8-9 Jun., A & D Turf Farm, GK (L); 1, 19 Jun., Tippo, GK, PH (L)

BAIRD'S SANDPIPER -- 1, 6 Aug., Little Texas, RP (R)

DUNLIN -- 5-27, 9 Jan.-20 Feb., (max. 27, 20 Feb.), Tunica Co., JW, m.ob. (R); 1, 13-16 Jan., Oktibbeha Co. Lake, TS (R); 24, 23 Dec., Sardis Waterfowl Ref., GK, VT, PH (R)

STILT SANDPIPER -- 1 ad, 11 Jul., Starkville south S.L., TS (E)

BUFF-BREASTED SANDPIPER -- 2, 21 Aug., 3, 22 Aug., 3, 17 Sep., A & D Turf Farm, GK, SK, MD (R)

SHORT-BILLED DOWITCHER -- 1 ad *hendersoni*, 11 Jul., Starkville south S.L., TS (A)

LONG-BILLED DOWITCHER -- 8, 9 Jan., 24 mi south of Tennessee state line, Tunica Co., JW (R)

COMMON SNIBE -- 600+, 20 Feb., Tunica Co., JW, JS (N); 1, 16 Aug., Loakfoma Lake, GK (E); 50+, 1 Nov., near South Unit Tallahatchie NWR, Grenada Co., TJ (N)

RED-NECKED PHALAROPE -- 1, 10-11 Sep., Belzoni, GK, SK, MD, PB (R)

LAUGHING GULL -- 1 in 2nd winter pl, 9 Feb., Oktibbeha Co. Lake, TS (R); 1, 13 Oct., Oktibbeha Co. Lake, TS (R)

FRANKLIN'S GULL -- 2, 23 Oct., Hancock Co., TS, MS; 45 imm, 2 ad, 5 Nov., Arkabutla Lake, DeSoto Co., JW (R,N); 35, 12 Nov., Arkabutla Lake, Tate & DeSoto cos., RP, WP (R,N); 1, 3 Dec., Arkabutla Lake, Tate & DeSoto cos., RP, WP (R)

LITTLE GULL -- 1 ad, 1 imm, 30-31 Dec., Sardis Dam, GK, SK, GB, IB (R - 7th & 8th state records)

BONAPARTE'S GULL -- 1 ad in alternate pl, 21 Jan., Grenada Dam, GK (R plumage); 1 ad in alternate pl, 22 Jan., Ross Barnett Reservoir, Rankin Co., TS, MS (R plumage)

RING-BILLED GULL -- 1, 21 Aug., Loakfoma Lake, TS (E); 6, 1 Sep., Sardis Waterfowl Ref., MD (E)

HERRING GULL -- 1, 17 Jan., Oktibbeha Co. Lake, TS (R); 5, 9 Oct., Sardis Waterfowl Ref., MD (E)

BLACK-LEGGED KITTIWAKE -- 1 in 1st winter pl, 20-26 Nov., 20 Dec., Grenada Dam, GK, SK, DK (R); 1 imm, 11 Dec., Sardis Dam, MD, RB (R)

COMMON TERN -- 2, 1 Sep., 1, 16 Sep., Sardis Waterfowl Ref., MD (R); 2 ad, 2 Oct., MSU North Farm S.L., TS (R); 3, 13 Oct., 1, 14 Oct., Oktibbeha Co. Lake, TS (R)

FORSTER'S TERN -- 1, 5 Jan., Bluff Lake, Noxubee Co., TS (R); 2 ad, 1 Jul., Oktibbeha Co. Lake, TS (E)

LEAST TERN -- 18, 14 May, Battle Catfish Ponds, Hwy. 4, Tunica Co., GK, SK (N); 1, 26 Jun., Bluff Lake, Noxubee Co., TS (E); 3, 9 Jul., Commerce, Tunica Co., RP, WP; 20, 23 Jul., Tunica Co., RP, WP; 10, 6 Aug., Arkabutla Lake, DeSoto Co., KM (R); 30, 6 Aug., Little Texas, RP (N); 18 ad, 52 imm, 8 Aug., Little Texas, MD (N)

BLACK TERN -- 1, 3 May, MSU North Farm S.L., TS (R); 2, 17 May, Loakfoma Lake, TS (R); 1, 11 Jul., Starkville south S.L., TS (E); 7, 15 Jul., USFWS Robertson property, Leflore Co., TJ (E); 15+, 26 Jul., Eagle Lake, Warren Co., JBa, HM; 60, 21 Aug., Oktibbeha Co. Lake, 26, 21 Aug., MSU North Farm S.L., 17, 21 Aug., Loakfoma Lake, TS (N)

RINGED TURTLE-DOVE -- 1, 2 Sep., Starkville, TS (escape)

YELLOW-BILLED CUCKOO -- 1, 29 Oct., Noxubee NWR, Noxubee Co., TS, MS (L)

BARN OWL -- 2, 5 May, USFWS Wilkins property, Sunflower Co., TJ; 1 pr, 14 May, near Pritchard, Hwy. 3, Tunica Co., GK, SK (R)

SHORT-EARED OWL -- 3-10, 30 Jan.-28 Feb., Northwest of Hwy. 4 X Hwy. 3, Tunica Co., JW, GK, m.ob. (R); 3, 26 Dec., 5 mi south of West Point, GK, SK (R)

CHUCK-WILL'S-WIDOW -- 1, 13 Apr., near Noxubee NWR, Winston Co., TS (A)

CHIMNEY SWIFT -- 20, 22 Mar., Starkville, TS (A); 9, 18 Oct., Starkville south S.L., TS (D)

BUFF-BELLIED HUMMINGBIRD -- 1, 17 Dec., Jackson Co. CBC, CCa, JP (R)

RUBY-THROATED HUMMINGBIRD -- 1 imm m, 14 Jan., Long Beach, BS, MSa (R - banded); 1, 22 Mar., near Louisville, FW (A)

BLACK-CHINNED HUMMINGBIRD -- 1 ad m, 1 Jan.-15 Mar., Gulfport, BC (R - banded by BS, MSa, 3 Dec. 1993); 1 imm f, 13 Jan., Ocean Springs, JMi (R - small race, banded by BS, MSa); 1 imm m, 14 Jan., Long Beach, BS, MSa (R - banded); 1 ad m, 5 Oct.-31 Dec., Gulfport, BC (R - banded by BS, MSa, 23 Oct., return from winter 1993/1994)

ANNA'S HUMMINGBIRD -- 1, 21-31 Dec., Bay Saint Louis, JT, LS, m.ob. (R - 1st state record, identification confirmed by BS, 26 Dec.)

CALLIOPE HUMMINGBIRD -- 1 ad f, 1 Jan.-9 Feb., Ocean Springs, AD (R - 4th state record, banded by BS, MSa, 13 Jan.); 1 imm/f, 19 Oct.-31 Dec., Columbus, CC, TS, MS, m.ob. (R - 8th state record, identified by BS, 22 Feb. 1995); 1 imm m, 26 Dec., Diamondhead, BS, MSa (R - banded, 5th state record)

BROAD-TAILED HUMMINGBIRD -- 1 imm m, 1 Jan.-16 Feb., Henleyfield, Pearl River Co., DB, m.ob. (R - 1st state record, banded by BS, MSa, 14 Jan.)

RUFOUS HUMMINGBIRD -- 1 ad m, 1 Jan.-1 Feb., near Louisville, FW, m.ob. (R - banded BS, MSa, 10 Dec. 1993); 1, imm m, 14 Jan., Diamondhead, BS, MSa (R - banded); 1 ad m, 27-28 Jul., Starkville, BF (R - banded BS,

MSa, 28 Jul.); 1 ad m, 23 Sep., Waveland, BS, MSa (R - banded); 3 imm m, 6 Dec., Carriere, BS, MSa (R - banded); 2 imm m, 1 ad f, 6 Dec., Picayune, BS, MSa (R - banded); 1 imm f, 6 Dec., Diamondhead, BS, MSa (R - banded); 2 imm f, 7 Dec., Pickens, Holmes Co., BS, MSa (R - banded); 2 imm m, 26 Dec., Gulfport, BS, MSa (R - banded); 1 imm m, 26 Dec., Saucier, Harrison Co., BS, MSa (R - banded)

ALLEN'S HUMMINGBIRD -- 1 imm m, 9 Jan.-12 Mar., Pascagoula, LJ (R - 2nd State record, banded by BS, MSa, 13 Jan.)

Selasphorus sp. -- 1, 25 Oct.-30 Dec., Natchez, EW, DA, ET (R); 40, winter 1994/95, throughout Mississippi (R,N - birds reported to BS that left before he could band them)

YELLOW-BELLIED SAPSUCKER -- 1, 1 Oct., Oktibbeha Co. Lake, MS, TS (A)

HAIRY WOODPECKER -- 1, 11 Sep. & 3 Oct., near Hickory, JM

EASTERN WOOD-PEWEE -- 1, 13 Apr., Noxubee NWR, Winston Co., TS (A)

YELLOW-BELLIED FLYCATCHER -- 1, 17 Sep., Greenville, EA (R - banded)

ALDER FLYCATCHER -- 1, 1 Sep., 2 mi west of Starkville, TS (R)

WILLOW FLYCATCHER -- 1, 14 May, Bass Landing, DeSoto Co., GK, SK, JW, m.ob. (R)

Empidonax sp. (Traill's complex) -- 1, 15 May, Greenville, EA (banded)

LEAST FLYCATCHER -- 3, 7, 8 & 10 May, Greenville, EA (one banded each day)

EASTERN PHOEBE -- 1, 1 Oct., Bluff Lake, Noxubee Co., TS, MS (A)

SAY'S PHOEBE -- 1, 1 Dec., Yazoo NWR, DL (R)

VERMILION FLYCATCHER -- 1 imm m, 22-23 Oct., Port Bienville, WT, TS, MS (R)

SCISSOR-TAILED FLYCATCHER -- 1, 20 Oct., near Hickory, JM (R); 1, 20 Oct., North Unit Tallahatchie NWR, TJ (R); 2, 22 Oct., Greenwood Is. & PRM, TS, MS, JR, m.ob. (R); 3, 23 Oct., Port Bienville, TS, MS (R)

PURPLE MARTIN -- 2, 23 Feb., Starkville, MC (A)

TREE SWALLOW -- 1, 7 Mar., near Columbus, KK (A); 1, 27 Jul., Oktibbeha Co. Lake, TS (R)

NORTHERN ROUGH-WINGED SWALLOW -- 2, 7 Mar., near Columbus, KK (A); 1, 29 Oct., Noxubee NWR, Noxubee Co., TS, MS (D)

BANK SWALLOW -- 1, 12 Oct., Starkville south S.L., TS (L)

CLIFF SWALLOW -- 23 Jun., Tombigbee River X Hwy. 82, Tombigbee River X Hwy. 50, Luxapallila Creek X Hwy. 182, Lowndes Co., TS (nesting)

BARN SWALLOW -- 20, 7 Mar., near Columbus, KK (E)

FISH CROW -- 2, 12 Feb., Noxubee NWR, Noxubee Co., TS (A)

RED-BREASTED NUTHATCH -- 1, 18 Apr., near Louisville, TS (L); 1, 2 May, near Oxford, GK (L); 1, 24 Sep., Arkabutla Lake, Tate Co., GB, RP (A)

BEWICK'S WREN -- 1, 12 Feb., 8 mi east of Macon, TS (R); 1, 26 Nov. & 4 Dec., Oktibbeha Co. Lake, TS, MS (R)

HOUSE WREN -- 1, 24 Jan., Noxubee NWR, Noxubee Co., TS (R); 1, 28 Jan., Oktibbeha Co. Lake, TS (R); 1, 5 Feb., Grenada Dam, GK, PH (R)

SEDGE WREN -- 1, 5 Feb., Springdale WMA, GK, PH (R); 1, 23 Dec., Sardis Waterfowl Ref., GK (R)

MARSH WREN -- 1, 20 Dec., Grenada CBC, Grenada Co., DK, AM, TJ (R)

GOLDEN-CROWNED KINGLET -- 1, 15 Oct., Noxubee NWR, Noxubee Co., TS, MS (A)

RUBY-CROWNED KINGLET -- 1, 5 May, Jeff Busby Park, TS (D); 1, 1 Oct., Noxubee NWR, Noxubee Co., TS, MS (A)

BLUE-GRAY GNATCATCHER -- 1, 26 Dec., Moon Lake, Coahoma Co., GB (R)

VEERY -- 1, 1 May, Greenville, EA; 1, 24 Sep., Noxubee NWR, Noxubee Co., MS, TS (L)

GRAY-CHEEKED THRUSH -- 1, 23 Apr., Greenville, EA (banded); 1, 16 Oct., Noxubee NWR, Noxubee Co., TS (L)

SWAINSON'S THRUSH -- 1, 18 May, Starkville, TS (L); 1, 1 Oct., Noxubee NWR, Noxubee Co., MS, TS (D)

WOOD THRUSH -- 1, 19 Oct., MSU North Farm, TS (L)

CEDAR WAXWING -- 15, 28 Oct., MSU North Farm, TS (E)

WHITE-EYED VIREO -- 1, 22 Jun., Dahomey NWR, Bolivar Co., TJ; 1, 20 Dec., 6 mi east of Grenada, TS, MS (R)

SOLITARY VIREO -- 1, 5 May, Jeff Busby Park, TS (D); 1, 16 Oct., Starkville south S.L., TS (E); 3, 20 Dec., Grenada CBC, Grenada Co., DK, AM, TJ, TS, MS, MG (R); 1, 23 Dec., Sardis CBC, Lafayette Co., PB (R)

YELLOW-THROATED VIREO -- 2, 27 Sep., Dahomey NWR, Bolivar Co., TJ, NH; 1, 21 Oct., near Adaton, Oktibbeha Co., TS (L); 1, 27 Dec., Southern Hancock Co. CBC, CS, GM (R)

PHILADELPHIA VIREO -- 1, 14 May, Greenville, EA (banded); 2, 24 Sep.,

Arkabutla Lake, Tate Co., GB, RP; 1, 15 Oct., Noxubee NWR, Noxubee Co., TS, MS (D)

RED-EYED VIREO -- 1, 11 Apr., Starkville, TS (A); 2, 15 Oct., Noxubee NWR, Noxubee Co., MS, TS (D)

GOLDEN-WINGED WARBLER -- 1, 21 Aug., Noxubee NWR, Noxubee Co., TS (E); 1, 5 Sep., Sardis Lake, Lafayette Co., MD (R); 1, 15 Oct., Noxubee NWR, Noxubee Co., TS, MS (L)

Blue-winged X Golden-winged Warbler -- 1, 13 Sep., Oktibbeha Co. Lake, TS (R - like Blue-winged except for gold wing bars)

TENNESSEE WARBLER -- 1, 21 Apr., Lowndes Co., TS (A)

ORANGE-CROWNED WARBLER -- 1, 29 Jan., High Point Reservoir, Winston Co., TS (R); 1, 29 Jan., Noxubee NWR, Winston Co., TS (R); 1, 5 Feb., Grenada Dam, GK, PH (R); 1, 12 & 15 Feb., Noxubee NWR, Noxubee Co., TS (R); 1, 1 Oct., Madison's Lake, DeSoto Co., RP

YELLOW WARBLER -- 1, 25 May, Loakfoma Lake, TS (D)

CHESTNUT-SIDED WARBLER -- 1, 27 Aug., Noxubee NWR, Noxubee Co., TS (E); 1, 21 Oct., near Adaton, Oktibbeha Co., TS (L)

MAGNOLIA WARBLER -- 1, 21 May, Greenville, EA (D - banded); 1, 29 May, Noxubee NWR, Noxubee Co., MG, SH, KP, KS (L); 1, 1 Sep., Noxubee NWR, Noxubee Co., TS (A)

CAPE MAY WARBLER -- 1 imm f, 9 Oct., near Oxford, GK, SK, PH (R)

BLACK-THROATED BLUE WARBLER -- 1 m, 30 Apr., Sibley Farms, MS (R)

BLACK-THROATED GREEN WARBLER -- 1, 22 Mar., near Adaton, Oktibbeha Co., TS, MC (A); 1, 21 Aug., Noxubee NWR, Noxubee Co., TS (E); 1, 29 Oct., Noxubee NWR, Noxubee Co., TS, MS (D)

BLACKBURNIAN WARBLER -- 1, 1 Apr., Noxubee NWR, Noxubee Co., TS (E); 1, 10 May, Noxubee NWR, Oktibbeha Co., TS (D); 1, 15 Oct., Noxubee NWR, Noxubee Co., TS, MS (D)

YELLOW-THROATED WARBLER -- 1, 15 Oct., Noxubee NWR, Noxubee Co., TS, MS (L)

PALM WARBLER -- 1, 26 Jan., Golden Triangle Airport, TS (R); 2, 23 Dec., Sardis Lake, Lafayette Co., GK, PH (R); 1, 26 Dec., Moon Lake CBC, RP, GB, CB, BFo (R)

BAY-BREASTED WARBLER -- 1, 16 Oct., Noxubee NWR, Noxubee Co., TS (D)

CERULEAN WARBLER -- 1 f/imm, 21 Aug., Noxubee NWR, Noxubee Co., TS (R)

BLACK-AND-WHITE WARBLER -- 1, 19 Oct., MSU North Farm, TS (D)

AMERICAN REDSTART -- 2, 19 Oct., MSU North Farm, TS (D)

PROTHONOTARY WARBLER -- 1, 1 Apr., Noxubee NWR, Oktibbeha Co., TS (A); 2, 24 Sep., Arkabutla Lake, Tate Co., GB, RP (L); 1, 24 Sep., Noxubee NWR, Noxubee Co., TS, MS (D)

WORM-EATING WARBLER -- 1, 9 Oct., Noxubee NWR, TS, MS (L)

SWAINSON'S WARBLER -- 1, 1 Sep., Oktibbeha Co. Lake, TS (D)

OVENBIRD -- 1, 14 May, Greenville, EA (banded); 1, 16 Oct., Noxubee NWR, Noxubee Co., TS (D)

NORTHERN WATERTHRUSH -- 1, 10 May, Noxubee NWR, Noxubee Co., TS (L)

MOURNING WARBLER -- 1 m, 3 May, Starkville south S.L., TS (R); 1, 14

May, Bass Landing, DeSoto Co., GK, SK, JW, m.ob. (R)

COMMON YELLOWTHROAT -- 3, 5 Feb., Grenada Dam, GK, PH (R); 1, 20 Dec., Grenada CBC, Grenada Co., DK, AM, TJ (R)

HOODED WARBLER -- 1, 16 Oct., Noxubee NWR, Noxubee Co., TS (L)

WILSON'S WARBLER -- 1, 10 Sep., Sardis Lake, Lafayette Co., MD (R); 1, 24 Sep., Arkabutla Lake, DeSoto Co., GB, RP (R)

CANADA WARBLER -- 1, 13 & 15 May, Greenville, EA (banded)

SCARLET TANAGER -- 1, 30 Aug., Noxubee NWR, Noxubee Co., TS (A); 1, 15 Oct., Noxubee NWR, Noxubee Co., TS, MS (L)

ROSE-BREASTED GROSBEAK -- 1 m, 18 Apr., Starkville, LH (E); 1, 20 Sep., Oktibbeha Co. Lake, TS (A)

BLUE GROSBEAK -- 1, 15 Oct., Noxubee NWR, Noxubee Co., MS, TS (L)

INDIGO BUNTING -- 4, 18 Apr., Noxubee & Winston cos., TS (A); 1, 6 Nov., Eupora S.L., TS (L); 1 f, 23 Dec., Sardis Waterfowl Ref., GK (R)

PAINTED BUNTING -- 1 f, 29 Jan., near Greenville, EA (R); 1, 14 May, Walls, DeSoto Co., GK, SK, JW (R); 1, 24 May, Bolivar Co., TJ, NH (R)

DICKCISSEL -- 1, 27 Dec., Sardis Waterfowl Ref., GK, SK (R)

CLAY-COLORED SPARROW -- 1, 23 Dec., Sardis Waterfowl Ref., GK, VT, PH (R)

FIELD SPARROW -- 2, 27 Oct., Starkville south S.L., TS (A)

LARK SPARROW -- 1, 4 Jun., 6 mi west of Brooksville, GK, SK (R); 1, 5 Jun., 4 mi northeast of Macon, TS (R); 1, 26 Jun., Crawford, TS (R - nest with 3 eggs); 1 ad m, 17 Jul., Tippo, GK (R); 1 ad, 10 Sep., Arkabutla Dam, Tate Co., RP, WP (R); 1, 22 Oct., PRM, GK, SK, TS, m.ob. (R)

GRASSHOPPER SPARROW -- 2, 30 Apr. & 14 May, near Bass Landing, DeSoto Co., GK, SK, JW (R); 2, 24 May, Bolivar Co., TJ, NH (R); 3, 5 Jun., 2, 26 Jun., 9 mi east of Macon, TS (R); 1, 27 Dec., Sardis Waterfowl Ref., GK, SK (R)

LECONTE'S SPARROW -- 2, 29 Jan. & 5 Feb., Noxubee NWR, Noxubee Co., TS, MS (R); 1, 23 Dec., Sardis Waterfowl Ref., GK, PH (R)

FOX SPARROW -- 2, 2 Nov., Golden Triangle Airport, TS (E)

SONG SPARROW -- 1, 13 Apr., Noxubee NWR, Winston Co., TS (D); 1, 15 Oct., Noxubee NWR, Noxubee Co., TS, MS (A)

LINCOLN'S SPARROW -- 1, 10 Apr., Greenville, EA (banded)

WHITE-THROATED SPARROW -- 1, 10 Oct., near Noxubee NWR, Oktibbeha Co., JB (A)

WHITE-CROWNED SPARROW -- 2, 28 Oct., Starkville south S.L., TS (A)

DARK-EYED "Oregon" JUNCO -- 1, 18 Jan., near Noxubee NWR, Oktibbeha Co., TS (R)

LAPLAND LONGSPUR -- 5000+, 22 Jan., 100+, 30 Jan., 450+, 5 Feb., 2000+, 13 Feb., near intersection Hwy. 3 and Hwy. 4, Tunica Co., JW, GK, SK (N)

WESTERN MEADOWLARK -- 5, 9 Jan., 6, 22 Jan., 6, 30 Jan., 6 13 Feb., Tunica Co., JW, GK (R)

YELLOW-HEADED BLACKBIRD -- 1 ad m, 7-9 Apr., Sardis Waterfowl Ref., VT, GK, SK, PH, MD (R)

NORTHERN ORIOLE -- 1 ad m, 1 Jan.-9 Apr., Starkville, MC, TS (R - Baltimore race); 2, 27 Aug., Noxubee NWR, Noxubee Co., TS (A); 1, 1 Oct., Oktibbeha Co. Lake, TS, MS (L)

PURPLE FINCH -- 1, 1 Apr., Noxubee NWR, TS (D)

HOUSE FINCH -- 1 f, 15 May, Greenville, EA (banded)

EVENING GROSBEAK -- 6, 29 Jan., Noxubee NWR, Winston Co., TS (R); 2-3, 29-30 Jan., 1, 9 Feb., near Noxubee NWR, Oktibbeha Co., JB, MC (R); 8, 14 Feb., Noxubee NWR, Oktibbeha Co., TS (R); 3, 4 Mar., 1, 10 Mar., near Noxubee NWR, Oktibbeha Co., JB, MC (R)

Contributors

David Aldridge, Ed Alexander, Philip Barbour, John Battalio (JBa), Gilbert Beaver, Ivon Beaver, David Brasell (DBr), Robert Brisco, Julia Broyles, Carolyn Bullock, Dot Burge, Judy Burkepile (JBu), Chris Caine, Bennett Carver, Chita Cassibry (CCa); David Chaffin, C.R. Chandler, Margaret Copeland, Agnes Davis, Marvin Davis, Doug Faulkner, Bob Farrar, Bill Fowler (BFo), Larry Gates, Terrie Gates, Mark Goodman, Ken Hackman, Susan Hazelwood, Leon Hepner, Nona Herbert, Prentiss Hooper, David Horn, Lucy Jacobson, Terri Jacobson, Richard Kaminski, Keith Kimmerle, David King, Tommy King, Gene Knight, Clint Lester, David Linden, Joseph McGee, Frank Manzo, Don McKee, Keith Meals, Tibor Mikuska, Janet Miller (JMi), Hal Moore, Gerry Morgan, Allan Mueller, Lynne Mueller, Kay Palmer, Dianne Patterson, Robert Peeples, William Peeples, JoRee Pennell, Steve Peterson, Judee Reeves, Bob Sargent, Martha Sargent (MSa), Marion Schiefer, Terence Schiefer, Lydia Schultz, Cathryn Sill, J. Stephenson, Kay Stewart, Eleanor Talley, Vic Theobald, Judith Touns, William Turcotte, Evelyn Wadsworth, Faye Weaver, Jeff Wilson, Mark Woodrey

Key to Localities

Localities not listed are indexed on the "Official Highway Map of Mississippi" or the county is listed in the main text.

A & D Turf Farm = Lafayette Co.; Arkabutla Dam/Lake = DeSoto & Tate cos.; Bellefontaine Beach = Jackson Co.; Blocker's Bottom = Oktibbeha Co.; Bluff Lake = Noxubee NWR, Noxubee & Oktibbeha cos.; Columbus Lake =

Lowndes & Clay cos.; Eagle Lake, Warren Co.; Enid Dam = Yalobusha Co.; Enid Lake = Yalobusha, Panola & Lafayette cos.; Golden Triangle Airport = Lowndes Co.; Greenwood Is. = Jackson Co.; Grenada Dam = Grenada Co.; Grenada Lake = Grenada, Yalobusha & Calhoun cos.; Jeff Busby Park = Choctaw Co.; Little Texas = Tunica Co.; Loakfoma Lake = Noxubee NWR, Noxubee Co.; Mississippi Sandhill Crane NWR = Jackson Co.; MSU North/South Farm/Golf Course = Oktibbeha Co.; Port Bienville = Hancock Co.; Noxubee NWR = Noxubee, Oktibbeha & Winston cos.; PRM = Pascagoula River Marsh, Jackson Co.; Ross Barnett Reservoir = Madison & Rankin cos.; Sardis Dam/Lower Lake = Panola Co.; Sardis Lake = Panola & Lafayette cos.; Sardis Waterfowl Ref. = Lafayette Co.; Seaman Rd. S.L. = Jackson Co.; Sibley Farms = Adams Co.; Springdale WMA = Lafayette Co.; Yazoo NWR = Washington Co.

THE MISSISSIPPI KITE

Mississippi Ornithological Society
Organized 30 April 1955

Officers

President	Allan J. Mueller 4308 Shenandoah Road Vicksburg, MS 39180
Vice President	Marion Hutto Schiefer 1394 P.D. Fulgham Road Starkville, MS 39759
Secretary	Carolyn Jarnigan Rt. 3, Box 217 Corinth, MS 38834
Treasurer	Janet Dubuisson 22410 Glad Acres Pass Christian, MS 39571
Editor: The Mississippi Kite	Jerome A. Jackson Dept. of Biological Sciences Mississippi State University Mississippi State, MS 39762
Editor: MOS Newsletter	W. Marvin Davis 308 Lewis Lane Oxford, MS 38655

MOS Memberships

Honorary	No dues
Life	\$100
Sustaining	20 (or more)
Active	10
Family	15
Library Subscriptions	10
Junior (under 17) and Golden Age (over 65)	4
Junior/Golden Age Family	8

Membership and subscription dues should be sent to the Treasurer. The Mississippi Kite is currently published twice a year and is sent to all classes of membership.